

TEST REPORT

Product Name: Rechargeable LiFePO4 Battery
(Rechargeable Li-ion Battery System)


Client: Portable Solar LLC d/b/a Sol-Ark

Classification of Test: Commission Test

CVC Testing Technology Co., Ltd.



Test Report

Product Name	Rechargeable LiFePO4 Battery (Rechargeable Li-ion Battery System)	Type/Model	L3 HV-X (X=15,20,25,30,35,40,45,50,55,60)
Client	Portable Solar LLC d/b/a Sol-Ark	Address	805 Central Expwy S Allen, TX 75013,USA
Quantity of Sample	1 batch	Sample Identifier	—
Means of Receiving	Supplied by client	Classification of Test :	Commission Test
Receiving Date	2023-09-13	Completing Date	2023-09-22
Test Items	TSCA (The cotent of DecaBDE, HCBd, PCTP, 2,4,6-TTBP, PIP3:1)		
Tested According to	EPA 3550C:2007, EPA 8270E:2018		
Test Conclusion	<p>The tested result refer to page 24~30. (The following blank)</p> <div></div>		

Approved by: Xia Qingyun

Xia Qingyun

Reviewed by: Zhou Ye

Zhou Ye

Tested by: Lu Yating

Lu Yating

Sample Description and Remark

1.Sample Photo:



2.Product photo:



Sample Description and Remark

3.Remark: The following information is provided by the client, and the laboratory is not responsible for its authenticity.

①Product photo (L3 HV-60) is provided by the client.

②Manufacturer: [REDACTED]

Manufacturer's address: [REDACTED]

③Factory: [REDACTED]

Factory's address: [REDACTED]

④According to the declaration of the client, the test sample (see the Sample Material List for details) is the component material of the product (Type/Model: L3 HV-X(X=15,20,25,30,35,40,45,50,55,60))

4.According to the requirements of the client, only part of the material of the sample is tested. See "Test Materials List" on page 5~14 for details.

5 According to the declaration of the client, the materials difference of the parts/components between the products applied this time and the product has been tested (report number: GJW2023-5012) is shown in table 1, except for the materials in table 1, the other materials are the same. It has been confirmed that this application need to carry out supplementary tests on the cover type, and it is considered that the standard requirements are met. This time the cover type is added. Except for the component No.64, the test result of other components refer to report No. GJW2023-5012. This report must be used concurrently with the original report.

Table 1

No.	Component Name	Tested type	Cover type	Remark
64	Screen printing + coating	BOS-G60	L3 HV-60	—

Sample Material list

No.	Component		Test Unit		Remark
	Component No.	Component Name	Specimen No.	Specimen Name	
1.	1	Green plastic strip	1	Green plastic strip	—
2.	2	Black plastic sheet	2	Black plastic sheet	—
3.	3	Plastic sheet	3-1	Plastic sheet - double-sided tape	—
4.			3-2	Plastic sheet. - black plastic sheet	—
5.	4	Foam pad	4-1	Foam pad - double-sided tape	—
6.			4-2	Foam pad - black foam	—
7.	5	Clasp assembly	5-1	Buckle assembly - black plastic nails	—
8.			5-2	Buckle assembly - brown plastic	—
9.	6	Metal frame. - black plastic	6	Metal frame. - black plastic	—
10.	7	Metal frame 1- white	7	Metal frame 1- white coating	—
11.	8	Connecting cable 1	8-1	Cable 1- black plastic housing	—
12.			8-2	Cable 1- black plastic casing	—
13.			8-3	Connection wire 1- transparent plastic	—
14.			8-4	Cable 1- green white cable leather	—
15.			8-5	Cable 1- green cable leather	—
16.			8-6	Cable 1- blue and white leather	—
17.			8-7	Cable 1- blue cable leather	—
18.			8-8	Cable 1- brown cable leather	—
19.			8-9	Cable 1- orange cable leather	—
20.			8-10	Cable 1- brown white cable leather	—
21.			8-11	Cable 1- orange white cable leather	—
22.	9	Connecting cable 2	9-1	Connecting wire 2- white seal ring	—
23.			9-2	Cable 2- black rubber sleeve	—
24.			9-3	Cable 2- black plastic housing	—
25.			9-4	Cable 2- black plastic cover	—
26.			9-5	Cable 2- black plastic 1	—
27.			9-6	Cable 2- black plastic 2	—
28.			9-7	Cable 2- orange plastic housing	—
29.			9-8	Cable 2- orange plastic cover	—
30.			9-9	Connection wire 2- orange plastic 1	—
31.			9-10	Connection wire 2- orange plastic 2	—
32.			9-11	Connecting wire 2- red wire leather	—
33.	10	Top cover 1	10-1	Top cover 1- TAB	—
34.			10-2	Top cover 1- coating	—
35.	11	Side panels - white	11	Side panels - white coating	—
36.	12	Transparent rubber	12	Transparent rubber	—
37.	13	Connector 1	13-1	Connector 1- black plastic plug	—
38.			13-2	Connector 1- black plastic	—
39.			13-3	Connector 1- black seal ring	—
40.			13-4	Connector 1- white rubber	—
41.	14	Connector 2	14-1	Connector 2- orange plastic	—
42.			14-2	Connector 2- black plastic	—
43.			14-3	Connector 2- black seal ring	—
44.			14-4	Connector 2- white rubber	—

Sample Material list

No.	Component		Test Unit		Remark
	Component No.	Component Name	Specimen No.	Specimen Name	
45.	15	PCB Board 1	15-1	PCB Board 1-P1/2 black plastic	—
46.			15-2	PCB Board 1-P3/4 beige plastic	—
47.			15-3	PCB Board 1- resin board	—
48.	16	PCB Board 2	16-1	PCB Board 2- white glue	—
49.			16-2	PCB Board 2-P1/5 grey plastic	—
50.			16-3	PCB Board 2-P2~4 black plastic	—
51.			16-4	PCB Board 2-E1/2 diaphragm	—
52.			16-5	PCB Board 2-E1/2 black rubber	—
53.			16-6	PCB Board 2-E1/2 black plastic seat	—
54.			16-7	PCB Board 2- resin board	—
55.	17	Plastic plate	17-1	Plastic board. - black plastic board	—
56.			17-2	Plastic sheet - double-sided tape	—
57.	18	Brown plastic buckle	18	Brown plastic buckle	—
58.	19	Binding white plastic	19	Binding white plastic	—
59.	20	Stationary frame 1-	20	Stationary frame 1- orange plastic	—
60.	21	Mounting frame 2- black	21	Mounting frame 2- black plastic	—
61.	22	Wiring harness 1	22-1	Harness 1- label	—
62.			22-2	Harness 1- black woven fabric	—
63.			22-3	Harness 1- black plastic	—
64.			22-4	Harness 1- white plastic	—
65.			22-5	Harness 1- grey plastic	—
66.			22-6	Harness 1- black wire leather	—
67.			22-7	Harness 1- red wire leather	—
68.	23	Wiring harness 2	23-1	Harness 2- label	—
69.			23-2	Harness 2- black woven fabric	—
70.			23-3	Harness 2- black plastic	—
71.			23-4	Harness 2- white plastic	—
72.			23-5	Harness 2- connector black plastic	—
73.			23-6	Harness 2- black wire leather	—
74.			23-7	Harness 2- red wire leather	—
75.	24	Wiring harness 3	24-1	Harness 3- label	—
76.			24-2	Harness 3- black woven fabric	—
77.			24-3	Harness 3- white sheathing	—
78.			24-4	Harness 3- connector black plastic	—
79.			24-5	Harness 3- black adhesive seal	—
80.			24-6	Harness 3- black wire leather	—
81.	25	Wiring harness 4	25-1	Harness 4- label	—
82.			25-2	Harness 4- black woven fabric	—
83.			25-3	Harness 4- black sheath	—
84.			25-4	Harness 4- black skin	—
85.			25-5	Harness 4- connector black plastic	—
86.			25-6	Harness 4- connector white plastic	—
87.			25-7	Harness 4- black wire leather	—
88.			25-8	Harness 4- green wire leather	—

Sample Material list

No.	Component		Test Unit		Remark
	Component No.	Component Name	Specimen No.	Specimen Name	
89.	25	Wiring harness 4	25-9	Harness 4- yellow wire leather	—
90.			25-10	Harness 4- red wire leather	—
91.	26	Wiring harness 5	26-1	Harness 5- label	—
92.			26-2	Harness 5- black woven fabric	—
93.			26-3	Harness 5- black sheathing	—
94.			26-4	Harness 5- black skin	—
95.			26-5	Harness 5- connector grey plastic	—
96.			26-6	Harness 5- connector white plastic	—
97.			26-7	Harness 5- black leather 1	—
98.			26-8	Harness 5- black leather 2	—
99.			26-9	Harness 5- red wire leather	—
100.			26-10	Harness 5- green wire leather	—
101.			26-11	Harness 5- yellow wire leather	—
102.	27	Wiring harness 6	27-1	Harness 6- label	—
103.			27-2	Harness 6- black sheath	—
104.			27-3	Harness 6- yellow green wire leather	—
105.	28	Specification	28	Specification	—
106.	29	Connecting cable 3	29-1	Cable 3- black sheath	—
107.			29-2	Cable 3- yellow green cable leather	—
108.	30	Connector 3	30-1	Connector 3- white rubber ring	—
109.			30-2	Connector 3- black rubber	—
110.			30-3	Connector 3- orange plastic housing	—
111.			30-4	Connector 3- orange plastic cover	—
112.	31	Connector 4	31-1	Connector 4- white rubber ring	—
113.			31-2	Connector 4- red wire leather	—
114.			31-3	Connector 4- black rubber	—
115.			31-4	Connector 4- orange plastic housing	—
116.			31-5	Connector 4- orange plastic cover	—
117.	32	Connector 5	32-1	Connector 5- white rubber ring	—
118.			32-2	Connector 5- black rubber	—
119.			32-3	Connector 5- black plastic housing 1	—
120.			32-4	Connector 5- black plastic housing 2	—
121.			32-5	Connector 5- black plastic cover	—
122.	33	Connecting cable 4	33-1	Connecting wire 4- white rubber ring	—
123.			33-2	Cable 4- black rubber	—
124.			33-3	Cable 4- black plastic housing	—
125.			33-4	Cable 4- black plastic cover	—
126.			33-5	Cable 4- black plastic block	—
127.			33-6	Cable 4- black cable leather	—
128.	34	Connecting cable 5	34-1	Connecting wire 5- clear plastic shell	—
129.			34-2	Cable 5- black cover	—
130.			34-3	Cable 5- black plastic housing	—
131.			34-4	Cable 5- orange cable leather	—
132.			34-5	Cable 5- brown cable leather	—

Sample Material list

No.	Component		Test Unit		Remark
	Component No.	Component Name	Specimen No.	Specimen Name	
133	34	Connecting cable 5	34-6	Cable 5- orange white cable leather	—
134			34-7	Cable 5- green cable leather	—
135			34-8	Cable 5- green white cable leather	—
136			34-9	Cable 5- blue cable leather	—
137			34-10	Connecting wire 5- blue white wire	—
138			34-11	Cable 5- white brown cable leather	—
139	35	Connecting cable 6	35-1	Connecting wire 6- clear plastic shell	—
140			35-2	Cable 6- bind black cable leather	—
141			35-3	Cable 6- black plastic housing	—
142			35-4	Cable 6- black cover	—
143			35-5	Cable 6- orange white cable leather	—
144			35-6	Cable 6- blue and white wire leather	—
145			35-7	Cable 6- orange cable leather	—
146			35-8	Cable 6- brown cable leather	—
147			35-9	Cable 6- brown white cable leather	—
148			35-10	Cable 6- green cable leather	—
149			35-11	Cable 6- green white cable leather	—
150			35-12	Cable 6- blue cable leather	—
151	36	Bottom cover - white coat	36	Bottom cover - white coat	—
152	37	Top cover 2	37-1	Top cover - label	—
153			37-2	Top cover - white coating	—
154	38	Front cover plate	38-1	Front cover - label	—
155			38-2	Front cover - coating	—
156	39	Controller	39-1	Handle - black plastic 1	—
157			39-2	Handle - black plastic 2	—
158			39-3	Handle - black plastic 3	—
159			39-4	Handle - red plastic	—
160			39-5	Handle - white glue	—
161			39-6	Handle - black seal 1	—
162			39-7	Handle - black seal ring 2	—
163			39-8	Handle - black seal ring 3	—
164	40	Connector 6	40-1	Connector 6- black plastic	—
165			40-2	Connector 6- black seal ring	—
166			40-3	Connector 6- white rubber washer	—
167			40-4	Connector 6- transparent plastic cover	—
168			40-5	Connector 6- orange plastic housing	—
169			40-6	Connector 6- black plastic housing	—
170	41	Key assembly	41-1	Key assembly - key 1 blue plastic	—
171			41-2	Key assembly - key 1 transparent	—
172			41-3	Key assembly - key 1LED transparent	—
173			41-4	Key assembly - key 1 resistor body	—
174			41-5	Key assembly - key 1 grey plastic case	—
175			41-6	Key assembly - key 1 black seal ring	—
176			41-7	Key assembly - key 1 white plastic	—

Sample Material list

No.	Component		Test Unit		Remark
	Component No.	Component Name	Specimen No.	Specimen Name	
177	41	Key assembly	41-8	Key assembly - key 2 yellow plastic	—
178			41-9	Key assembly - key 2 black plastic ring	—
179			41-10	Key assembly - key 2 blue plastic	—
180			41-11	Key assembly - key 2 black plastic	—
181			41-12	Key assembly - key 2 yellow	—
182			41-13	Key assembly - key 2 transparent tape	—
183			41-14	Key assembly - key 2LED yellow	—
184			41-15	Key assembly - key 2 resistor body	—
185			41-16	Key assembly - key 2 transparent	—
186			41-17	Key assembly - key 2 black seal ring	—
187			41-18	Key assembly - key 2 white plastic	—
188			41-19	Key assembly - key 2 white plastic	—
189			41-20	Key assembly - key 3 red plastic	—
190			41-21	Key assembly - key 3 black plastic	—
191			41-22	Key assembly - key 3 red translucent	—
192			41-23	Key assembly - key 3 transparent	—
193			41-24	Key assembly - key 3 black plastic ring	—
194			41-25	Key assembly - key 3 blue plastic	—
195			41-26	Key assembly - key 3LED red housing	—
196			41-27	Key assembly - key 3LED resistor	—
197			41-28	Key assembly - key 3 transparent	—
198			41-29	Key assembly - key 3 black seal ring	—
199			41-30	Key assembly - key 3 white plastic	—
200			41-31	Key assembly - key 3 white plastic	—
201	42	Display screen	42-1	Display - black plastic frame	—
202			42-2	Display - transparent film	—
203			42-3	Display - metal frame white coating	—
204			42-4	Display - white plastic frame	—
205			42-5	Display - white plastic sheet	—
206			42-6	Display - glass black coating	—
207			42-7	Display - black glue	—
208			42-8	Display - Double-sided tape	—
209			42-9	Display -FPC yellow adhesive paper	—
210			42-10	Display -FPC orange skin	—
211			42-11	Display - silver film	—
212			42-12	Display - white plastic film	—
213			42-13	Display - clear plastic film	—
214			42-14	Display - clear plastic panel	—
215			42-15	Display - blue tape	—
216			42-16	Display -PCB board J6 beige plastic	—
217			42-17	Display - black foam	—
218			42-18	Display - resin board	—
219	43	Sheet metal - white	43	Sheet metal - white coating	—
220	44	Metal frame 2- white	44	Metal frame 2- white coating	—

Sample Material list

No.	Component		Test Unit		Remark
	Component No.	Component Name	Specimen No.	Specimen Name	
221	45	Black plastic sheet	45	Black plastic sheet	—
222	46	Insulated column - red	46	Insulated column - red plastic housing	—
223	47	Thyristor module	47-1	Thyristor module - transparent colloid	—
224			47-2	Thyristor module - white colloid	—
225			47-3	Thyristor module - black plastic	—
226			47-4	Thyristor module - black plastic seal	—
227	48	Connector 7	48-1	Connector 7- black plastic ring	—
228			48-2	Connector 7- connectors white plastic	—
229			48-3	Connector 7- black plastic cover	—
230			48-4	Connector 7- black plastic strip	—
231			48-5	Connector 7- label	—
232			48-6	Connector 7- white sheath	—
233			48-7	Connector 7- yellow rubber	—
234			48-8	Connector 7- black sheath	—
235			48-9	Connector 7- black plastic housing	—
236			48-10	Connector 7- black cable leather	—
237			48-11	Connector 7- red cable leather	—
238	49	Circuit breaker	49-1	Circuit breaker - black plastic post	—
239			49-2	Circuit breaker - white plastic	—
240			49-3	Circuit breaker - clear plastic plate	—
241			49-4	Circuit breaker - black plastic housing	—
242			49-5	Circuit breaker - grey plastic	—
243	50	Timer	50-1	Timer - grey plastic housing	—
244			50-2	Timer - grey plastic cover	—
245			50-3	Timer - grey plastic 1	—
246			50-4	Timer - grey plastic 2	—
247			50-5	Timer - label	—
248	51	Mounting frame 3- red	51	Mounting frame 3- red plastic	—
249	52	Mounting frame 4- black	52	Mounting frame 4- black plastic	—
250	53	Stationary frame 5- pink	53	Stationary frame 5- pink plastic	—
251	54	Fuse	54-1	Fuse - white powder	—
252			54-2	Fuse - label	—
253			54-3	Fuse - white plastic housing	—
254	55	Relay 1	55-1	Relay 1- connector white plastic	—
255			55-2	Relay 1- black wire leather	—
256			55-3	Relay 1- gray wire leather	—
257			55-4	Relay 1- white glue	—
258			55-5	Relay 1- white plastic housing	—
259			55-6	Relay 1- beige plastic inner housing	—
260			55-7	Relay 1- yellow adhesive paper	—
261			55-8	Relay 1- beige plastic column	—
262			55-9	Relay 1- brown plastic sheet	—
263	56	Relay 2	56-1	Relay 2- brown plastic sheet	—
264			56-2	Relay 2- white plastic housing	—

Sample Material list

No.	Component		Test Unit		Remark
	Component No.	Component Name	Specimen No.	Specimen Name	
265	56	Relay 2	56-3	Relay 2- beige plastic inner housing	—
266			56-4	Relay 2- beige plastic	—
267			56-5	Relay 2- yellow adhesive paper	—
268			56-6	Relay 2- beige plastic post	—
269			56-7	Relay 2- black wire leather	—
270			56-8	Relay 2- connector white plastic	—
271	57	PCB Board 3- resin board	57	PCB Board 3- resin board	—
272	58	PCB Board 4	58-1	PCB Board 4- metal frame white	—
273			58-2	PCB Board 4-P2 blue plastic housing	—
274			58-3	PCB Board 4- resin board	—
275	59	PCB Board 5	59-1	PCB Board 5-P1 black plastic	—
276			59-2	PCB Board 5-P2 white plastic board	—
277			59-3	PCB Board 5-P3/4 beige plastic	—
278			59-4	PCB Board 5- resin board	—
279	60	PCB Board 6	60-1	PCB Board 6-J1~3 black plastic	—
280			60-2	PCB Board 6-P1/3 black plastic	—
281			60-3	PCB Board 6-P2 grey plastic	—
282			60-4	PCB Board 6-resin board	—
283	61	PCB Board 7	61-1	PCB Board 7-P4/16 grey plastic	—
284			61-2	PCB Board 7-P19 green plastic	—
285			61-3	PCB Board 7-P3/5/6/15/17/18 black	—
286			61-4	PCB Board 7-P7 black plastic	—
287			61-5	PCB Board 7-J3 black plastic	—
288			61-6	PCB Board 7-E3/4 black rubber	—
289			61-7	PCB Board 7-E3/4 black plastic seat	—
290			61-8	PCB Board 7-U1 black plastic case	—
291			61-9	PCB Board 7-U1T1 yellow adhesive	—
292			61-10	PCB Board 7-U1T1 black plastic rack	—
293			61-11	PCB Board 7-U1EC black plastic skin	—
294			61-12	PCB Board 7-U1EC black rubber	—
295			61-13	PCB Board 7-U1EC diaphragm	—
296			61-14	PCB Board 7-U1L1 to L2 black jacket	—
297			61-15	PCB Board 7-U1CX1 grey plastic shell	—
298			61-16	PCB Board 7-U1 resin board	—
299			61-17	PCB Board 7-resin board	—
300	62	Harness assembly	62-1	Harness assembly - wire 1 label	—
301			62-2	Harness assembly - wire 1 black	—
302			62-3	Harness assembly - cable 1 black	—
303			62-4	Harness assembly - wire 2 white	—
304			62-5	Harness assembly - wire 2 red wire	—
305			62-6	Harness assembly - wire 2 white wire	—
306			62-7	Harness assembly - wire 3 white	—
307			62-8	Harness assembly - wire 3 white cover	—
308			62-9	Harness assembly - cable 3 red cable	—

Sample Material list

No.	Component		Test Unit		Remark
	Component No.	Component Name	Specimen No.	Specimen Name	
309	62	Harness assembly	62-10	Harness assembly - wire 4 white	—
310			62-11	Harness assembly - cable 4 red cable	—
311			62-12	Harness assembly - wire 4 white cover	—
312			62-13	Harness assembly - wire 5 label	—
313			62-14	Harness assembly - wire 5 black	—
314			62-15	Harness assembly - cable 5	—
315			62-16	Harness assembly - wire 6 label	—
316			62-17	Harness assembly - wire 6 black	—
317			62-18	Harness assembly - cable 6 black	—
318			62-19	Harness assembly - wire 7 label	—
319			62-20	Harness assembly - wire 7 connector	—
320			62-21	Harness assembly - thread 7 black	—
321			62-22	Harness assembly - wire 7 black	—
322			62-23	Harness assembly - wire 7 black cover	—
323			62-24	Harness assembly - cable 7 yellow	—
324			62-25	Harness assembly - cable 7 black	—
325			62-26	Cable assembly - cable 7 green cable	—
326			62-27	Harness assembly - wire 8 label	—
327			62-28	Harness assembly - wire 8 black	—
328			62-29	Harness assembly - wire 8 white	—
329			62-30	Harness assembly - wire 8 connector	—
330			62-31	Harness assembly - cable 8 black	—
331			62-32	Harness assembly - cable 8 yellow	—
332			62-33	Harness assembly - cable 8 green	—
333			62-34	Harness assembly - thread 8 black	—
334			62-35	Harness assembly - wire 9 label	—
335			62-36	Harness assembly - wire 9 black	—
336			62-37	Harness assembly - thread 9 black	—
337			62-38	Harness assembly - cable 9 connector	—
338			62-39	Harness assembly - cable 9 black	—
339			62-40	Harness assembly - cable 9 yellow	—
340			62-41	Cable assembly - cable 9 green cable	—
341			62-42	Harness assembly - cable 9 black	—
342			62-43	Harness assembly - wire 10 label	—
343			62-44	Harness assembly - thread 10 black	—
344			62-45	Harness assembly - wire 10 white	—
345			62-46	Harness assembly - cable 10	—
346			62-47	Cable assembly - cable 10 black cable	—
347			62-48	Harness assembly - cable 10 red cable	—
348			62-49	Harness assembly - wire 11	—
349			62-50	Harness assembly - cable 11	—
350			62-51	Harness assembly - cable 11 label	—
351			62-52	Harness assembly - thread 11 black	—
352			62-53	Cable assembly - cable 11 black cable	—

Sample Material list

No.	Component		Test Unit		Remark
	Component No.	Component Name	Specimen No.	Specimen Name	
353	62	Harness assembly	62-54	Cable assembly - cable 11 red cable	—
354			62-55	Cable assembly - cable 11 yellow	—
355			62-56	Cable assembly - cable 11 green cable	—
356			62-57	Harness assembly - cable 11 black	—
357			62-58	Harness assembly - wire 12 black	—
358			62-59	Harness assembly - wire 12 connector	—
359			62-60	Harness assembly - wire 12 connector	—
360			62-61	Harness assembly - wire 12 label	—
361			62-62	Harness assembly - thread 12 black	—
362			62-63	Harness assembly - cable 12 black	—
363			62-64	Harness assembly - cable 12 yellow	—
364			62-65	Cable assembly - cable 12 green cable	—
365			62-66	Harness assembly - cable 12 red cable	—
366			62-67	Harness assembly - wire 12 black	—
367			62-68	Harness assembly - wire 13 connector	—
368			62-69	Harness assembly - wire 13 connector	—
369			62-70	Harness assembly - cable 13	—
370			62-71	Harness assembly - wire 13 label	—
371			62-72	Harness assembly - thread 13 black	—
372			62-73	Harness assembly - cable 13 red cable	—
373			62-74	Harness assembly - cable 13 black	—
374			62-75	Harness assembly - wire 14	—
375			62-76	Harness assembly - wire 14 connector	—
376			62-77	Harness assembly - wire 14 white	—
377			62-78	Harness assembly - wire 14 label	—
378			62-79	Harness assembly - thread 14 black	—
379			62-80	Harness assembly - cable 14 black	—
380			62-81	Harness assembly - cable 14 yellow	—
381			62-82	Harness assembly - cable 14 red cable	—
382			62-83	Harness assembly - cable 14 green	—
383			62-84	Harness assembly - wire 14 black	—
384			62-85	Harness assembly - wire 14 black	—
385			62-86	Harness assembly - wire 15 black	—
386			62-87	Harness assembly - cable 15	—
387			62-88	Harness assembly - cable 15	—
388			62-89	Harness assembly - cable 15	—
389			62-90	Harness assembly - cable 15 red cable	—
390			62-91	Cable assembly - cable 15 black cable	—
391			62-92	Harness assembly - wire 15 black	—
392			62-93	Harness assembly - thread 15 black	—
393	63	Cell assembly	63-1	Cell assembly - dark blue adhesive	—
394			63-2	Cell assembly - yellow adhesive paper	—
395			63-3	Cell assembly - green adhesive paper	—
396			63-4	Cell assembly - blue adhesive paper 1	—

Sample Material list					
No.	Component		Test Unit		Remark
	Component No.	Component Name	Specimen No.	Specimen Name	
397	63	Cell assembly	63-5	Cell assembly - blue adhesive paper 2	—
398			63-6	Cell assembly - transparent plastic	—
399			63-7	Cell assembly - transparent adhesive	—
400			63-8	Cell assembly - white diaphragm	—
401			63-9	Cell assembly - beige diaphragm	—
402			63-10	Cell assembly - black plastic sheet	—
403			63-11	Cell assembly - black plastic film	—
404			63-12	Cell assembly - black plastic rack	—
405			63-13	Cell components - electrolyte	—
406	64	Color coating	64	Color coating	Differential pieces

List of test group

Number of test group	Material composition
(1.)	1,2,3-2
(2.)	4-1,5-1,5-2
(3.)	6,8-1,8-2
(4.)	8-3,8-4,8-5
(5.)	8-6,8-7,8-8
(6.)	8-9,8-10,8-11
(7.)	9-3,9-4,9-5
(8.)	9-6,9-7,9-8
(9.)	9-9,9-10,9-11
(10.)	10-1,13-1,13-2
(11.)	14-1,14-2,15-1
(12.)	15-2,15-3,16-2
(13.)	16-3,16-4,16-6
(14.)	16-7,17-118
(15.)	19,20,21
(16.)	22-1,22-3,22-4

Remark:

- 1) Similar materials of one or more components combined in equal proportion by mass are divided into a group.
- 2) Only non-metallic materials shall be tested.

List of test group

Number of test group	Material composition
(17.)	22-5,22-6,22-7
(18.)	23-1,23-3,23-4
(19.)	23-5,23-6,23-7
(20.)	24-1,24-3,24-4
(21.)	24-5,24-6,25-1
(22.)	25-3,25-4,25-5
(23.)	25-6,25-7,25-8
(24.)	25-9,25-10,26-1
(25.)	26-3,26-4,26-5
(26.)	26-6,26-7,26-8
(27.)	26-9,26-10, 26-11
(28.)	27-1,27-2,27-3
(29.)	29-1,29-2,30-3
(30.)	30-4,31-2,31-4
(31.)	31-5,32-3,32-4
(32.)	32-5,33-3,33-4

Remark:

- 3) Similar materials of one or more components combined in equal proportion by mass are divided into a group.
- 4) Only non-metallic materials shall be tested.

List of test group

Number of test group	Material composition
(33.)	33-5,33-6,34-1
(34.)	34-2,34-3,34-4
(35.)	34-5,34-6,34-7
(36.)	34-8,34-9,34-10
(37.)	34-11,35-1,35-2
(38.)	35-3,35-4,35-5
(39.)	35-6,35-7,35-8
(40.)	35-9,35-10,35-11
(41.)	35-12,37-1,38-1
(42.)	39-1,39-2,39-3
(43.)	39-4,40-1,40-4
(44.)	40-5,40-6,41-1
(45.)	41-5,41-7,41-8
(46.)	41-9,41-10,41-11
(47.)	41-12,41-13,41-18
(48.)	41-19,41-20,41-21

Remark:

- 5) Similar materials of one or more components combined in equal proportion by mass are divided into a group.
- 6) Only non-metallic materials shall be tested.

List of test group

Number of test group	Material composition
(49.)	41-22,41-23,41-24
(50.)	41-25,41-30,41-31
(51.)	42-1,42-2,42-4
(52.)	42-5,42-9,42-10
(53.)	42-11,42-12,42-13
(54.)	42-14,42-15,42-16
(55.)	42-17,42-18,4
(56.)	46,47-3,48-1
(57.)	48-2,48-3,48-4
(58.)	48-5,48-6,48-8
(59.)	48-9,48-10,48-11
(60.)	49-1,49-2,49-3
(61.)	49-4,49-5,50-1
(62.)	50-2,50-3,50-4
(63.)	50-5,51,52
(64.)	53,54-2,54-3

Remark:

- 7) Similar materials of one or more components combined in equal proportion by mass are divided into a group.
- 8) Only non-metallic materials shall be tested.

List of test group

Number of test group	Material composition
(65.)	55-1,55-2,55-3
(66.)	55-5,55-6,55-7
(67.)	55-8,55-9,56-1
(68.)	56-2,56-3,56-4
(69.)	56-5,56-6,56-7
(70.)	56-8,57,58-2
(71.)	58-3,59-1,59-2
(72.)	59-3,59-4,60-1
(73.)	60-2,60-3,60-4
(74.)	61-1,61-2,61-3
(75.)	61-4,61-5,61-7
(76.)	61-8,61-9,61-10
(77.)	61-11,61-13,61-14
(78.)	61-15,61-16,61-17
(79.)	62-1,62-2,62-3
(80.)	62-4,62-5,62-6

Remark:

- 9) Similar materials of one or more components combined in equal proportion by mass are divided into a group.
- 10) Only non-metallic materials shall be tested.

List of test group

Number of test group	Material composition
(81.)	62-7,62-8,62-9
(82.)	62-10,62-11,62-12
(83.)	62-13,62-14,62-15
(84.)	62-16,62-17,62-18
(85.)	62-19,62-20,62-22
(86.)	62-23,62-24,62-25
(87.)	62-26,62-27,62-28
(88.)	62-29,62-30,62-31
(89.)	62-32,62-33,62-35
(90.)	62-36,62-38,62-39
(91.)	62-40,62-41,62-42
(92.)	62-43,62-45,62-46
(93.)	62-47,62-48,62-49
(94.)	62-50,62-51,62-53
(95.)	62-54,62-55,62-56
(96.)	62-57,62-58,62-59

Remark:

- 11) Similar materials of one or more components combined in equal proportion by mass are divided into a group.
- 12) Only non-metallic materials shall be tested.

List of test group

Number of test group	Material composition
(97.)	62-60,62-61,62-63
(98.)	62-64,62-65,62-66
(99.)	62-67,62-68,62-69
(100.)	62-70,62-71,62-73
(101.)	62-74,62-75,62-76
(102.)	62-77,62-78,62-80
(103.)	62-81,62-82,62-83
(104.)	62-84,62-85,62-86
(105.)	62-87,62-88,62-89
(106.)	62-90,62-91,62-92
(107.)	63-1,63-2,63-3
(108.)	63-4,63-5,63-6
(109.)	63-8,63-9,63-10
(110.)	63-11,63-12
(111.)	9-1,9-2,12
(112.)	13-3,13-4,14-3

Remark:

13) Similar materials of one or more components combined in equal proportion by mass are divided into a group.

14) Only non-metallic materials shall be tested.

List of test group

Number of test group	Material composition
(113.)	14-4,16-5,30-1
(114.)	30-2,31-1,31-3
(115.)	32-1,32-2,33-1
(116.)	33-2,39-6,39-7
(117.)	39-8,40-2,40-3
(118.)	41-2,41-6,41-16
(119.)	41-17,41-28,41-29
(120.)	48-7,61-6,61-1
(121.)	7,10-2,1
(122.)	36,37-2,38-2
(123.)	42-3,42-6,43
(124.)	44,58-1
(125.)	3-1,4-1,16-1
(126.)	17-2,39-5,42-7
(127.)	42-8,47-1,47-2
(128.)	47-4,55-4,63-7

Remark:

15) Similar materials of one or more components combined in equal proportion by mass are divided into a group.

16) Only non-metallic materials shall be tested.

List of test group

Number of test group	Material composition
(129.)	22-2,23-2,24-2
(130.)	25-2,26-2,62-21
(131.)	62-34,62-37,62-44
(132.)	62-52,62-62,62-72
(133.)	62-79,62-93
(134.)	28
(135.)	63-13
(136.)	54-1
(137.)	41-3,41-4,41-14
(138.)	41-15,41-26,41-27
(139.)	64

Remark:

- 17) Similar materials of one or more components combined in equal proportion by mass are divided into a group.
- 18) Only non-metallic materials shall be tested.

Test results

Table 1

Number of test group	Test items					Verdict
	Decabromodiphenyl ether (DecaBDE)	Phenol, isopropylated phosphate (3:1) [PIP (3:1)]	2,4,6-Tris(tert-butyl)phenol (2,4,6-TTBP)	Pentachlorothiophenol (PCTP)	Hexachlorobutadiene (HCBD)	
Limit requirement	Prohibited	Prohibited	≤0.3% from 6 Jan. 2026	≤1%	Prohibited	
Report limit (mg/kg)	10	10	10	10	10	
(1.)	N.D.	N.D.	N.D.	N.D.	N.D.	P
(2.)	N.D.	N.D.	N.D.	N.D.	N.D.	P
(3.)	N.D.	N.D.	N.D.	N.D.	N.D.	P
(4.)	N.D.	N.D.	N.D.	N.D.	N.D.	P
(5.)	N.D.	N.D.	N.D.	N.D.	N.D.	P
(6.)	N.D.	N.D.	N.D.	N.D.	N.D.	P
(7.)	N.D.	N.D.	N.D.	N.D.	N.D.	P
(8.)	N.D.	N.D.	N.D.	N.D.	N.D.	P
(9.)	N.D.	N.D.	N.D.	N.D.	N.D.	P
(10.)	N.D.	N.D.	N.D.	N.D.	N.D.	P
(11.)	N.D.	N.D.	N.D.	N.D.	N.D.	P
(12.)	N.D.	N.D.	N.D.	N.D.	N.D.	P
(13.)	N.D.	N.D.	N.D.	N.D.	N.D.	P
(14.)	N.D.	N.D.	N.D.	N.D.	N.D.	P
(15.)	N.D.	N.D.	N.D.	N.D.	N.D.	P
(16.)	N.D.	N.D.	N.D.	N.D.	N.D.	P
(17.)	N.D.	N.D.	N.D.	N.D.	N.D.	P
(18.)	N.D.	N.D.	N.D.	N.D.	N.D.	P
(19.)	N.D.	N.D.	N.D.	N.D.	N.D.	P
(20.)	N.D.	N.D.	N.D.	N.D.	N.D.	P
(21.)	N.D.	N.D.	N.D.	N.D.	N.D.	P
(22.)	N.D.	N.D.	N.D.	N.D.	N.D.	P

Remark: "N.D." means "not detected" (below the report limit).

Test results

Table 1continue

Number of test group	Test items					Verdict
	Decabromodiphenyl ether (DecaBDE)	Phenol, isopropylated phosphate (3:1) [PIP (3:1)]	2,4,6-Tris(tert-butyl)phenol (2,4,6-TTBP)	Pentachlorothiophenol (PCTP)	Hexachlorobutadiene (HCBD)	
Limit requirement	Prohibited	Prohibited	≤0.3% from 6 Jan. 2026	≤1%	Prohibited	
Report limit (mg/kg)	10	10	10	10	10	
(23.)	N.D.	N.D.	N.D.	N.D.	N.D.	P
(24.)	N.D.	N.D.	N.D.	N.D.	N.D.	P
(25.)	N.D.	N.D.	N.D.	N.D.	N.D.	P
(26.)	N.D.	N.D.	N.D.	N.D.	N.D.	P
(27.)	N.D.	N.D.	N.D.	N.D.	N.D.	P
(28.)	N.D.	N.D.	N.D.	N.D.	N.D.	P
(29.)	N.D.	N.D.	N.D.	N.D.	N.D.	P
(30.)	N.D.	N.D.	N.D.	N.D.	N.D.	P
(31.)	N.D.	N.D.	N.D.	N.D.	N.D.	P
(32.)	N.D.	N.D.	N.D.	N.D.	N.D.	P
(33.)	N.D.	N.D.	N.D.	N.D.	N.D.	P
(34.)	N.D.	N.D.	N.D.	N.D.	N.D.	P
(35.)	N.D.	N.D.	N.D.	N.D.	N.D.	P
(36.)	N.D.	N.D.	N.D.	N.D.	N.D.	P
(37.)	N.D.	N.D.	N.D.	N.D.	N.D.	P
(38.)	N.D.	N.D.	N.D.	N.D.	N.D.	P
(39.)	N.D.	N.D.	N.D.	N.D.	N.D.	P
(40.)	N.D.	N.D.	N.D.	N.D.	N.D.	P
(41.)	N.D.	N.D.	N.D.	N.D.	N.D.	P
(42.)	N.D.	N.D.	N.D.	N.D.	N.D.	P
(43.)	N.D.	N.D.	N.D.	N.D.	N.D.	P
(44.)	N.D.	N.D.	N.D.	N.D.	N.D.	P

Remark: "N.D." means "not detected" (below the report limit).

Test results

Table 1continue

Number of test group	Test items					Verdict
	Decabromodiphenyl ether (DecaBDE)	Phenol, isopropylated phosphate (3:1) [PIP (3:1)]	2,4,6-Tris(tert-butyl)phenol (2,4,6-TTBP)	Pentachlorothiophenol (PCTP)	Hexachlorobutadiene (HCBD)	
Limit requirement	Prohibited	Prohibited	≤0.3% from 6 Jan. 2026	≤1%	Prohibited	
Report limit (mg/kg)	10	10	10	10	10	
(45.)	N.D.	N.D.	N.D.	N.D.	N.D.	P
(46.)	N.D.	N.D.	N.D.	N.D.	N.D.	P
(47.)	N.D.	N.D.	N.D.	N.D.	N.D.	P
(48.)	N.D.	N.D.	N.D.	N.D.	N.D.	P
(49.)	N.D.	N.D.	N.D.	N.D.	N.D.	P
(50.)	N.D.	N.D.	N.D.	N.D.	N.D.	P
(51.)	N.D.	N.D.	N.D.	N.D.	N.D.	P
(52.)	N.D.	N.D.	N.D.	N.D.	N.D.	P
(53.)	N.D.	N.D.	N.D.	N.D.	N.D.	P
(54.)	N.D.	N.D.	N.D.	N.D.	N.D.	P
(55.)	N.D.	N.D.	N.D.	N.D.	N.D.	P
(56.)	N.D.	N.D.	N.D.	N.D.	N.D.	P
(57.)	N.D.	N.D.	N.D.	N.D.	N.D.	P
(58.)	N.D.	N.D.	N.D.	N.D.	N.D.	P
(59.)	N.D.	N.D.	N.D.	N.D.	N.D.	P
(60.)	N.D.	N.D.	N.D.	N.D.	N.D.	P
(61.)	N.D.	N.D.	N.D.	N.D.	N.D.	P
(62.)	N.D.	N.D.	N.D.	N.D.	N.D.	P
(63.)	N.D.	N.D.	N.D.	N.D.	N.D.	P
(64.)	N.D.	N.D.	N.D.	N.D.	N.D.	P
(65.)	N.D.	N.D.	N.D.	N.D.	N.D.	P
(66.)	N.D.	N.D.	N.D.	N.D.	N.D.	P

Remark: "N.D." means "not detected" (below the report limit).

Test results

Table 1continue

Number of test group	Test items					Verdict
	Decabromodiphenyl ether (DecaBDE)	Phenol, isopropylated phosphate (3:1) [PIP (3:1)]	2,4,6-Tris(tert-butyl)phenol (2,4,6-TTBP)	Pentachlorothiophenol (PCTP)	Hexachlorobutadiene (HCBD)	
Limit requirement	Prohibited	Prohibited	≤0.3% from 6 Jan. 2026	≤1%	Prohibited	
Report limit (mg/kg)	10	10	10	10	10	
(67.)	N.D.	N.D.	N.D.	N.D.	N.D.	P
(68.)	N.D.	N.D.	N.D.	N.D.	N.D.	P
(69.)	N.D.	N.D.	N.D.	N.D.	N.D.	P
(70.)	N.D.	N.D.	N.D.	N.D.	N.D.	P
(71.)	N.D.	N.D.	N.D.	N.D.	N.D.	P
(72.)	N.D.	N.D.	N.D.	N.D.	N.D.	P
(73.)	N.D.	N.D.	N.D.	N.D.	N.D.	P
(74.)	N.D.	N.D.	N.D.	N.D.	N.D.	P
(75.)	N.D.	N.D.	N.D.	N.D.	N.D.	P
(76.)	N.D.	N.D.	N.D.	N.D.	N.D.	P
(77.)	N.D.	N.D.	N.D.	N.D.	N.D.	P
(78.)	N.D.	N.D.	N.D.	N.D.	N.D.	P
(79.)	N.D.	N.D.	N.D.	N.D.	N.D.	P
(80.)	N.D.	N.D.	N.D.	N.D.	N.D.	P
(81.)	N.D.	N.D.	N.D.	N.D.	N.D.	P
(82.)	N.D.	N.D.	N.D.	N.D.	N.D.	P
(83.)	N.D.	N.D.	N.D.	N.D.	N.D.	P
(84.)	N.D.	N.D.	N.D.	N.D.	N.D.	P
(85.)	N.D.	N.D.	N.D.	N.D.	N.D.	P
(86.)	N.D.	N.D.	N.D.	N.D.	N.D.	P
(87.)	N.D.	N.D.	N.D.	N.D.	N.D.	P
(88.)	N.D.	N.D.	N.D.	N.D.	N.D.	P

Remark: "N.D." means "not detected" (below the report limit).

Test results

Table 1continue

Number of test group	Test items					Verdict
	Decabromodiphenyl ether (DecaBDE)	Phenol, isopropylated phosphate (3:1) [PIP (3:1)]	2,4,6-Tris(tert-butyl)phenol (2,4,6-TTBP)	Pentachlorothiophenol (PCTP)	Hexachlorobutadiene (HCBD)	
Limit requirement	Prohibited	Prohibited	≤0.3% from 6 Jan. 2026	≤1%	Prohibited	
Report limit (mg/kg)	10	10	10	10	10	
(89.)	N.D.	N.D.	N.D.	N.D.	N.D.	P
(90.)	N.D.	N.D.	N.D.	N.D.	N.D.	P
(91.)	N.D.	N.D.	N.D.	N.D.	N.D.	P
(92.)	N.D.	N.D.	N.D.	N.D.	N.D.	P
(93.)	N.D.	N.D.	N.D.	N.D.	N.D.	P
(94.)	N.D.	N.D.	N.D.	N.D.	N.D.	P
(95.)	N.D.	N.D.	N.D.	N.D.	N.D.	P
(96.)	N.D.	N.D.	N.D.	N.D.	N.D.	P
(97.)	N.D.	N.D.	N.D.	N.D.	N.D.	P
(98.)	N.D.	N.D.	N.D.	N.D.	N.D.	P
(99.)	N.D.	N.D.	N.D.	N.D.	N.D.	P
(100.)	N.D.	N.D.	N.D.	N.D.	N.D.	P
(101.)	N.D.	N.D.	N.D.	N.D.	N.D.	P
(102.)	N.D.	N.D.	N.D.	N.D.	N.D.	P
(103.)	N.D.	N.D.	N.D.	N.D.	N.D.	P
(104.)	N.D.	N.D.	N.D.	N.D.	N.D.	P
(105.)	N.D.	N.D.	N.D.	N.D.	N.D.	P
(106.)	N.D.	N.D.	N.D.	N.D.	N.D.	P
(107.)	N.D.	N.D.	N.D.	N.D.	N.D.	P
(108.)	N.D.	N.D.	N.D.	N.D.	N.D.	P
(109.)	N.D.	N.D.	N.D.	N.D.	N.D.	P
(110.)	N.D.	N.D.	N.D.	N.D.	N.D.	P

Remark: "N.D." means "not detected" (below the report limit).

Test results

Table 1continue

Number of test group	Test items					Verdict
	Decabromodiphenyl ether (DecaBDE)	Phenol, isopropylated phosphate (3:1) [PIP (3:1)]	2,4,6-Tris(tert-butyl)phenol (2,4,6-TTBP)	Pentachlorothiophenol (PCTP)	Hexachlorobutadiene (HCBD)	
Limit requirement	Prohibited	Prohibited	≤0.3% from 6 Jan. 2026	≤1%	Prohibited	
Report limit (mg/kg)	10	10	10	10	10	
(111.)	N.D.	N.D.	N.D.	N.D.	N.D.	P
(112.)	N.D.	N.D.	N.D.	N.D.	N.D.	P
(113.)	N.D.	N.D.	N.D.	N.D.	N.D.	P
(114.)	N.D.	N.D.	N.D.	N.D.	N.D.	P
(115.)	N.D.	N.D.	N.D.	N.D.	N.D.	P
(116.)	N.D.	N.D.	N.D.	N.D.	N.D.	P
(117.)	N.D.	N.D.	N.D.	N.D.	N.D.	P
(118.)	N.D.	N.D.	N.D.	N.D.	N.D.	P
(119.)	N.D.	N.D.	N.D.	N.D.	N.D.	P
(120.)	N.D.	N.D.	N.D.	N.D.	N.D.	P
(121.)	N.D.	N.D.	N.D.	N.D.	N.D.	P
(122.)	N.D.	N.D.	N.D.	N.D.	N.D.	P
(123.)	N.D.	N.D.	N.D.	N.D.	N.D.	P
(124.)	N.D.	N.D.	N.D.	N.D.	N.D.	P
(125.)	N.D.	N.D.	N.D.	N.D.	N.D.	P
(126.)	N.D.	N.D.	N.D.	N.D.	N.D.	P
(127.)	N.D.	N.D.	N.D.	N.D.	N.D.	P
(128.)	N.D.	N.D.	N.D.	N.D.	N.D.	P
(129.)	N.D.	N.D.	N.D.	N.D.	N.D.	P
(130.)	N.D.	N.D.	N.D.	N.D.	N.D.	P
(131.)	N.D.	N.D.	N.D.	N.D.	N.D.	P
(132.)	N.D.	N.D.	N.D.	N.D.	N.D.	P

Remark: "N.D." means "not detected" (below the report limit).

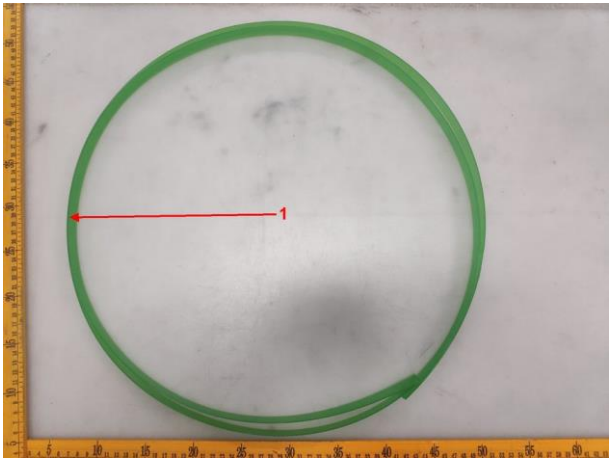
Test results

Table 1continue

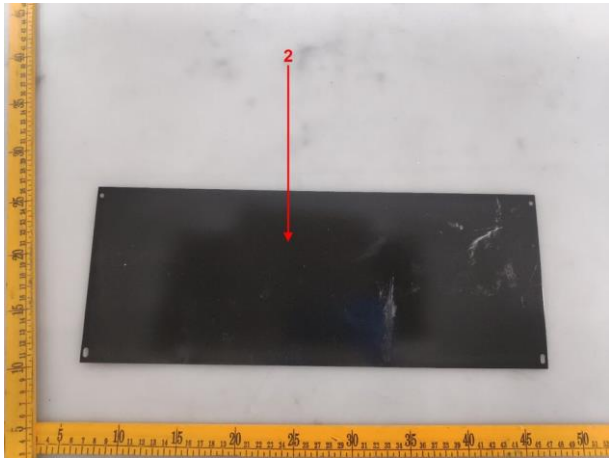
Number of test group	Test items					Verdict
	Decabromodiphenyl ether (DecaBDE)	Phenol, isopropylated phosphate (3:1) [PIP (3:1)]	2,4,6-Tris(tert-butyl)phenol (2,4,6-TTBP)	Pentachlorothiophenol (PCTP)	Hexachlorobutadiene (HCBD)	
Limit requirement	Prohibited	Prohibited	≤0.3% from 6 Jan. 2026	≤1%	Prohibited	
Report limit (mg/kg)	10	10	10	10	10	
(133.)	N.D.	N.D.	N.D.	N.D.	N.D.	P
(134.)	N.D.	N.D.	N.D.	N.D.	N.D.	P
(135.)	N.D.	N.D.	N.D.	N.D.	N.D.	P
(136.)	N.D.	N.D.	N.D.	N.D.	N.D.	P
(137.)	N.D.	N.D.	N.D.	N.D.	N.D.	P
(138.)	N.D.	N.D.	N.D.	N.D.	N.D.	P
(139.)	N.D.	N.D.	N.D.	N.D.	N.D.	P

Remark: "N.D." means "not detected" (below the report limit).

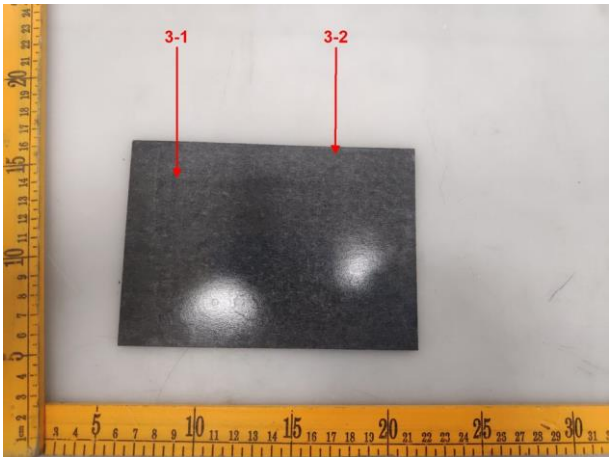
组件/部件/元器件照片



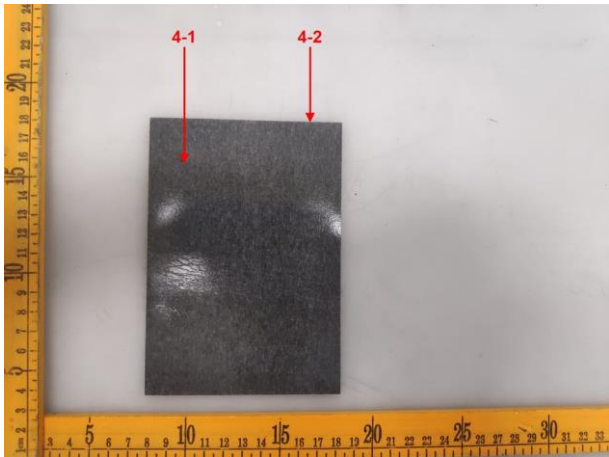
1



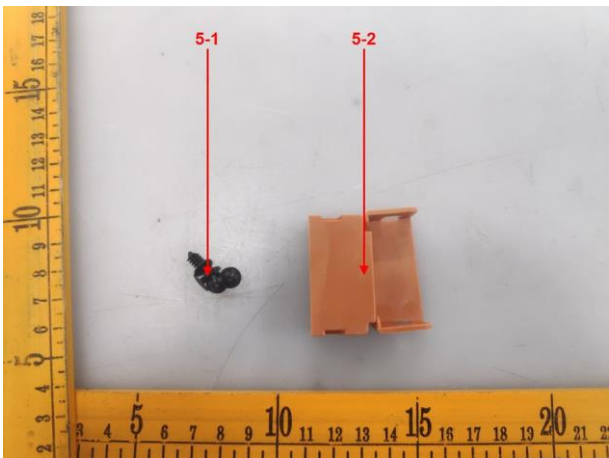
2



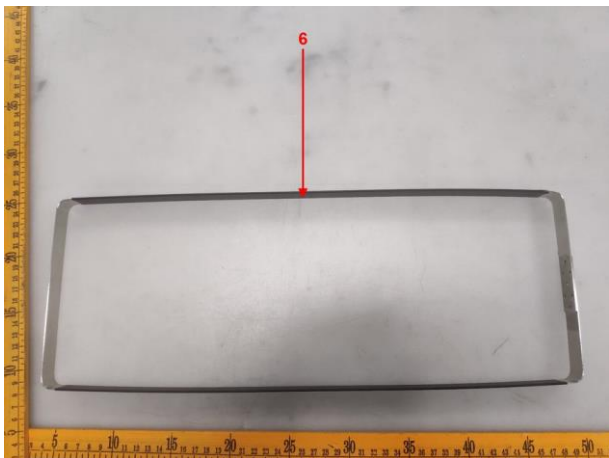
3-1~3-2



4-1~4-2

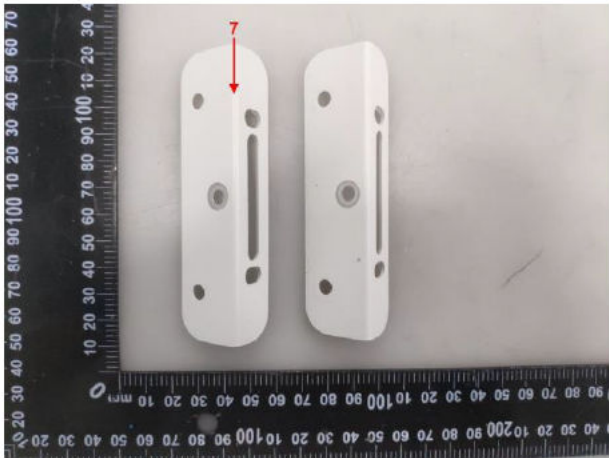


5-1~5-2

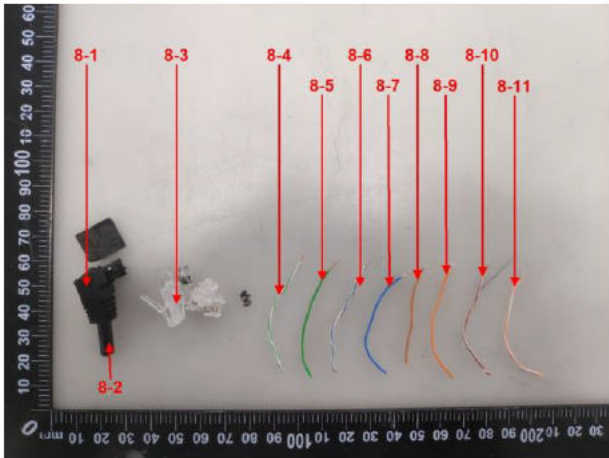


6

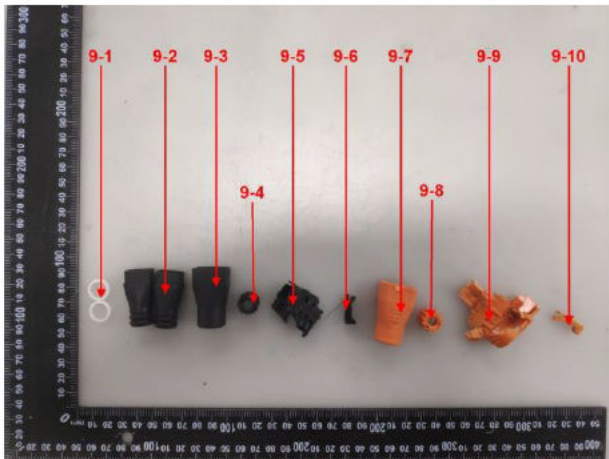
组件/部件/元器件照片



7



8-1~8-11



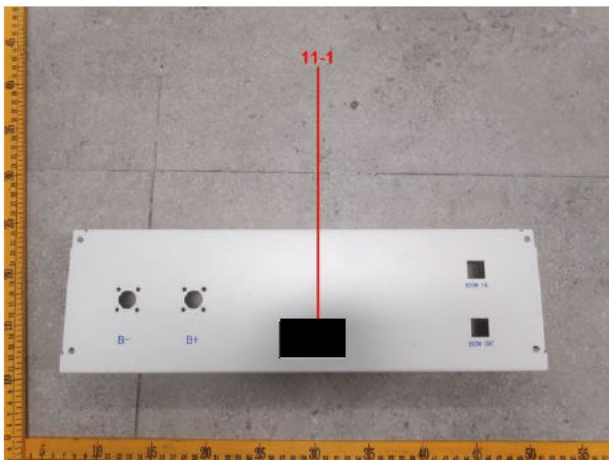
9-1~9-10



9-11

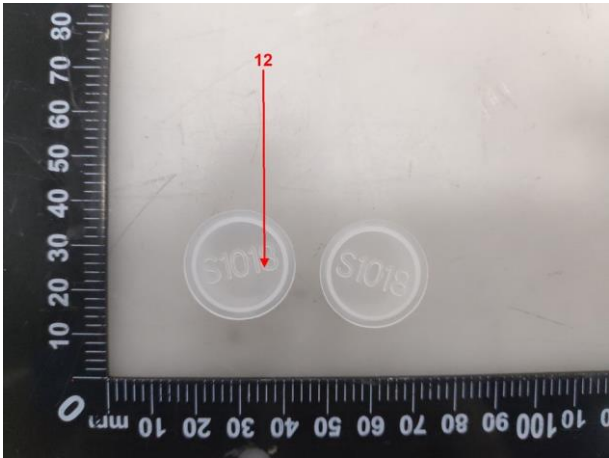


10-1~10-2

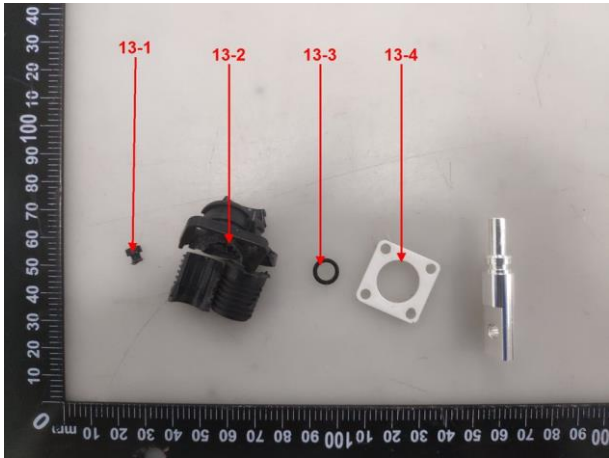


11-1

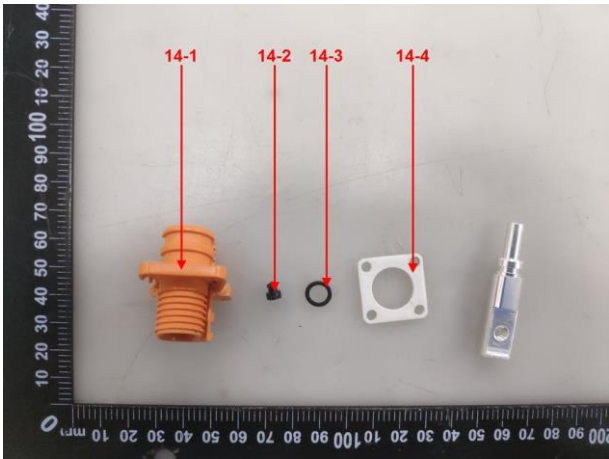
组件/部件/元器件照片



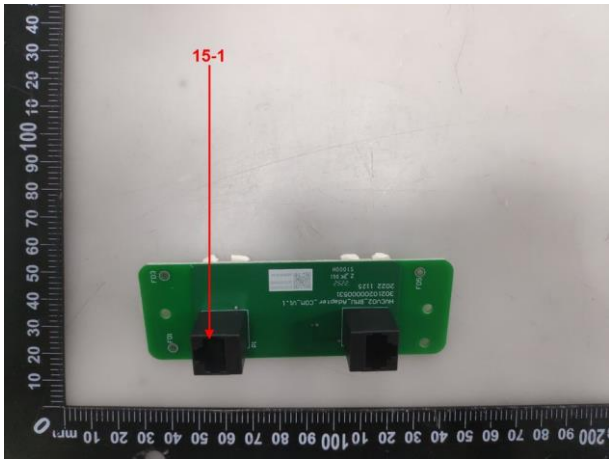
12



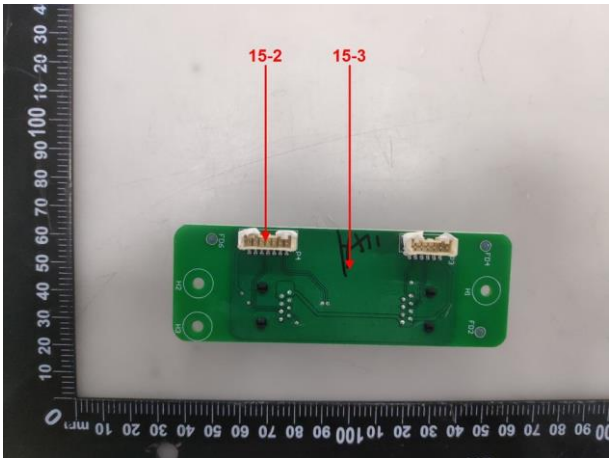
13-1~13-4



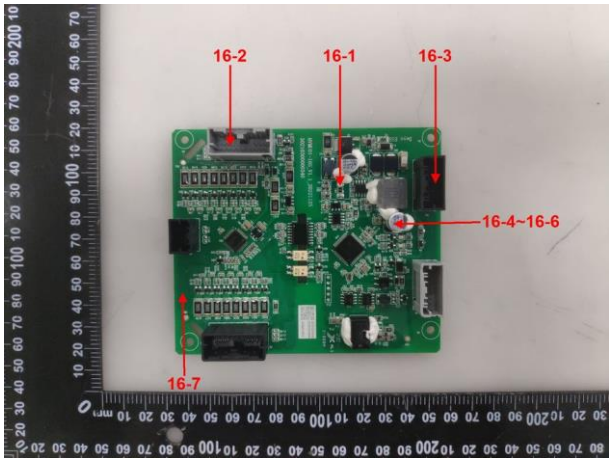
14-1~14-4



15-1

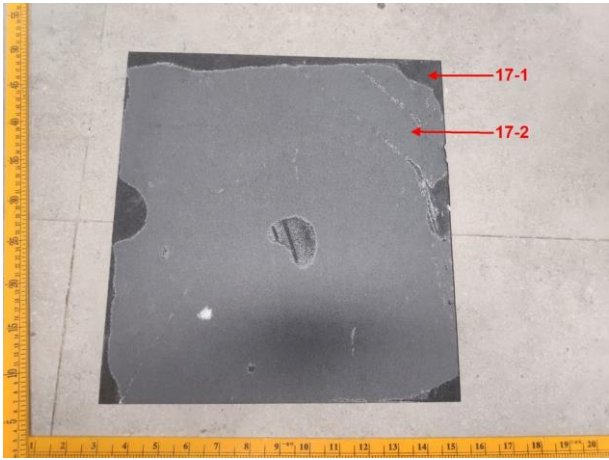


15-2~15-3

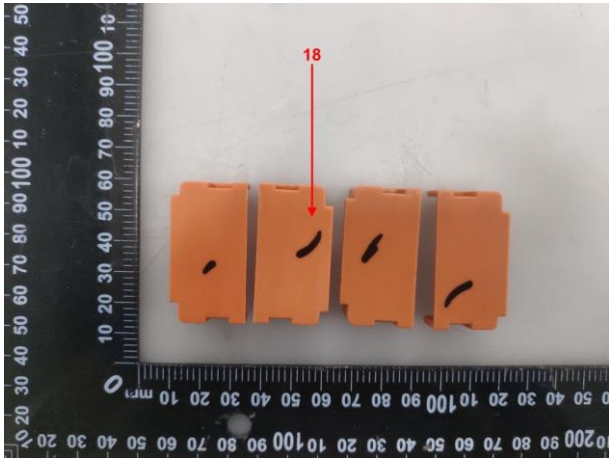


16-1~16-7

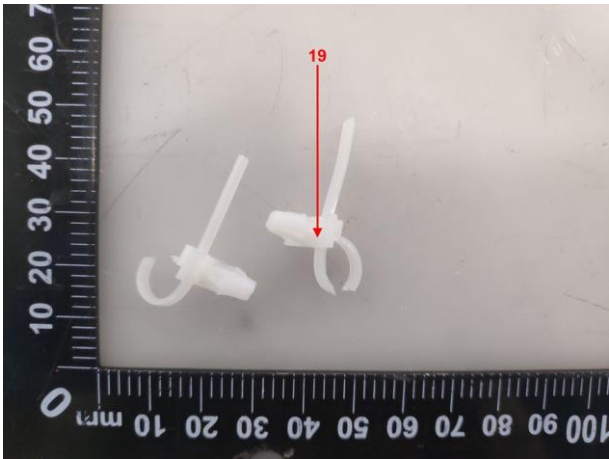
组件/部件/元器件照片



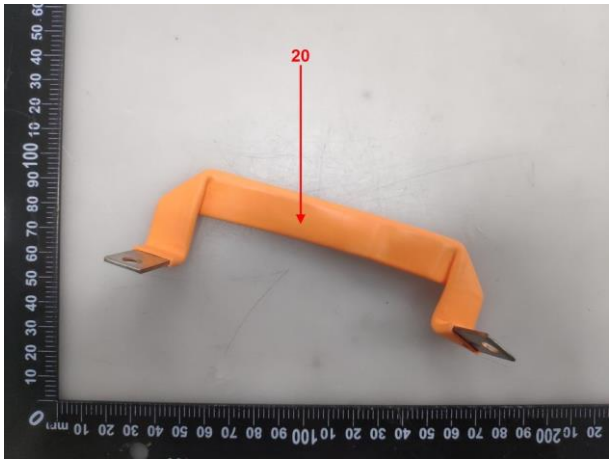
17-1~17-2



18



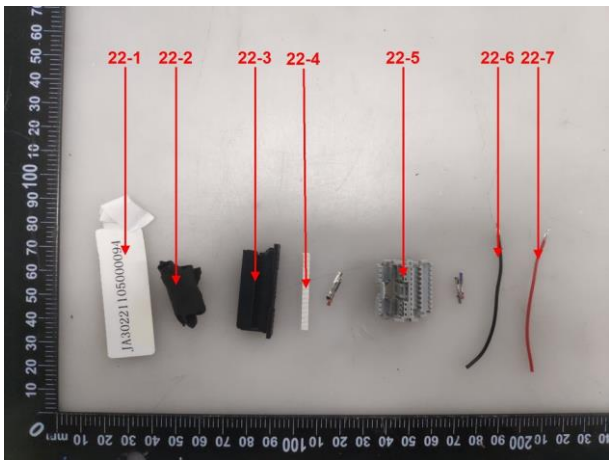
19



20

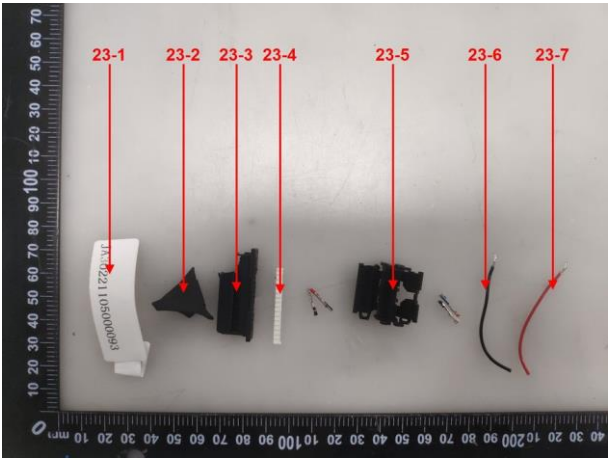


21



22-1~22-7

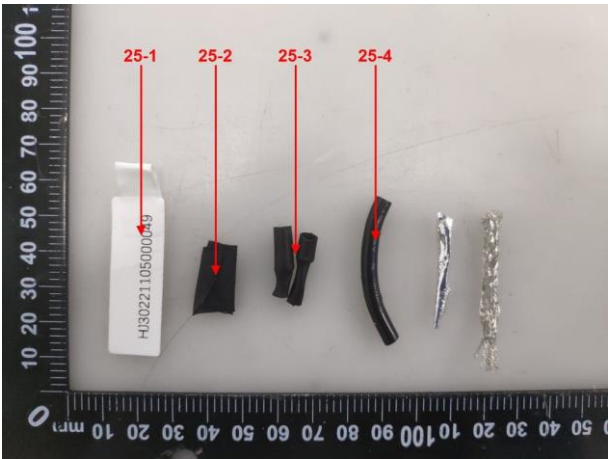
组件/部件/元器件照片



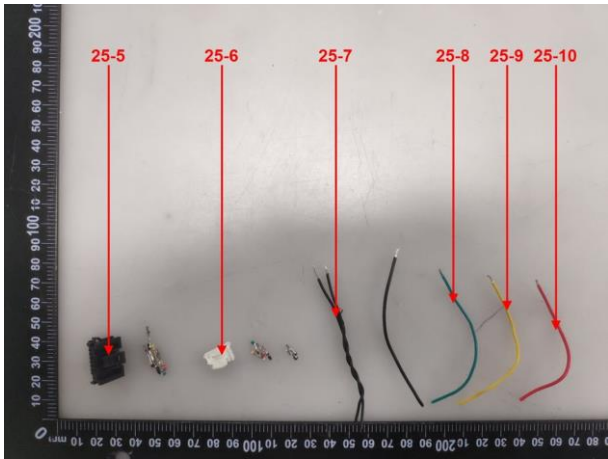
23-1~23-7



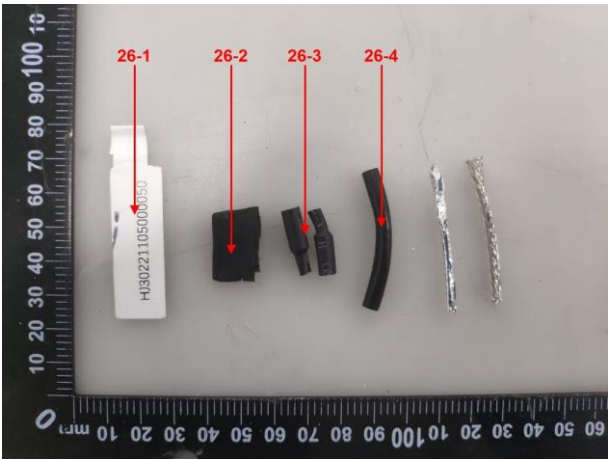
24-1~24-6



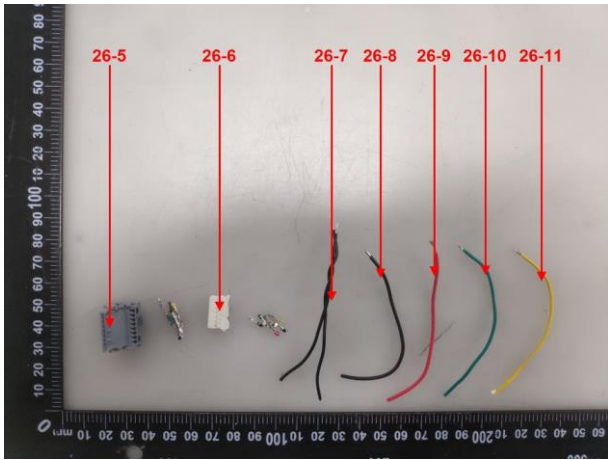
25-1~25-4



25-5~25-10

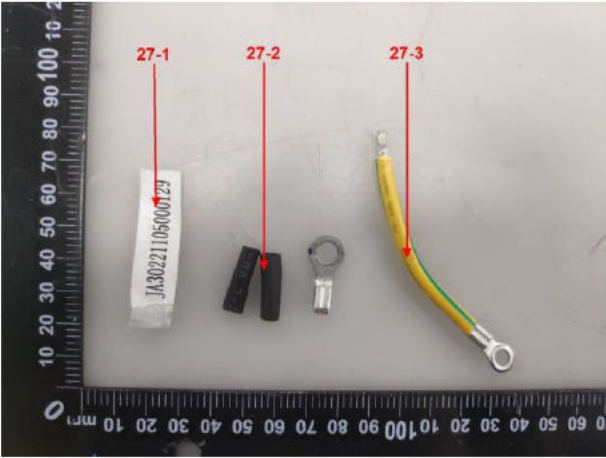


26-1~26-4

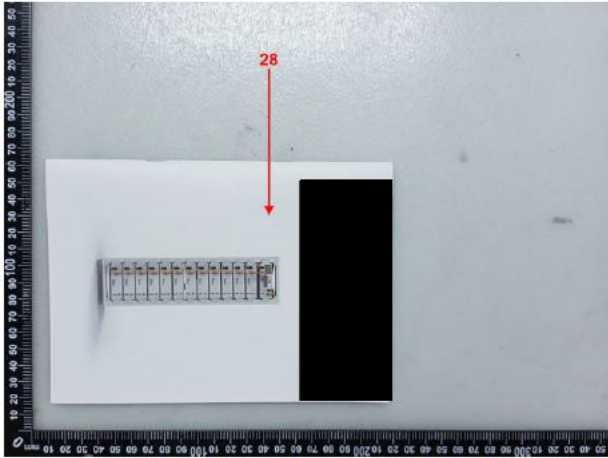


26-5~26-11

组件/部件/元器件照片



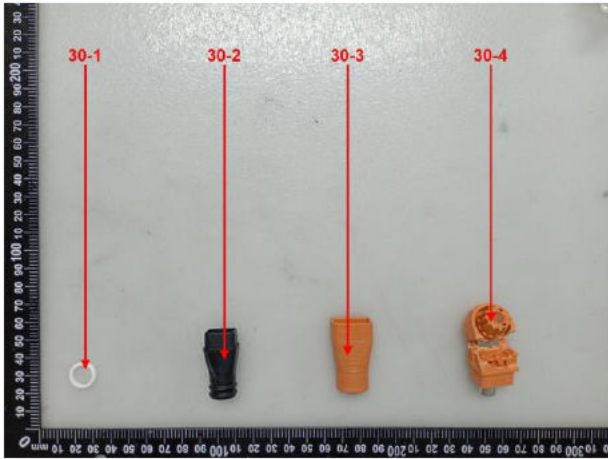
27-1~27-3



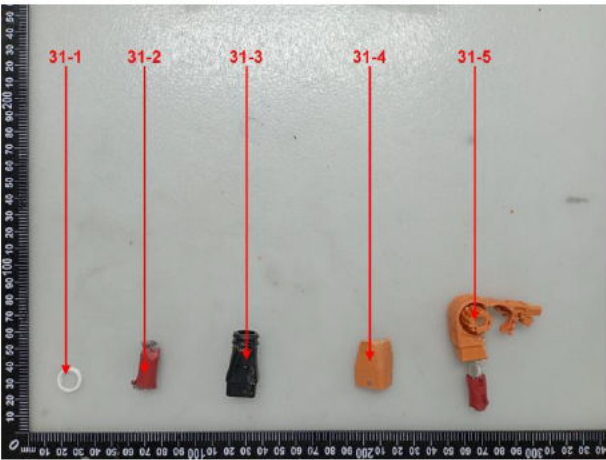
28



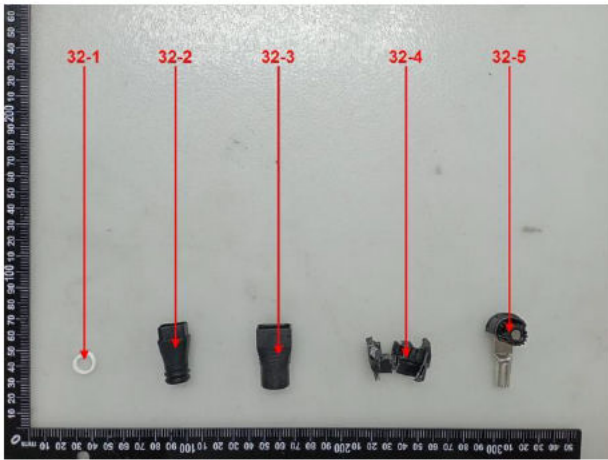
29-1~29-2



30-1~30-4



31-1~31-5

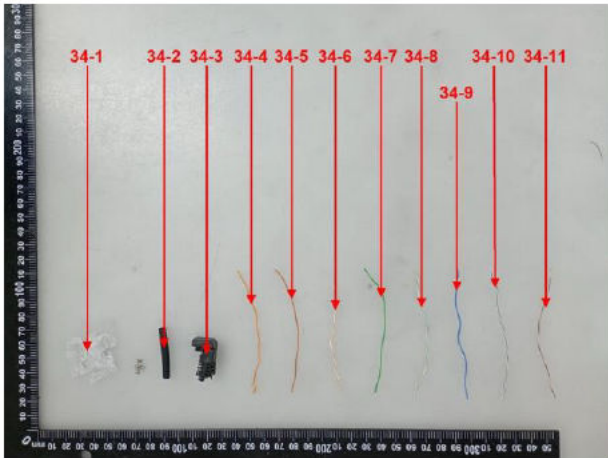


32-1~32-5

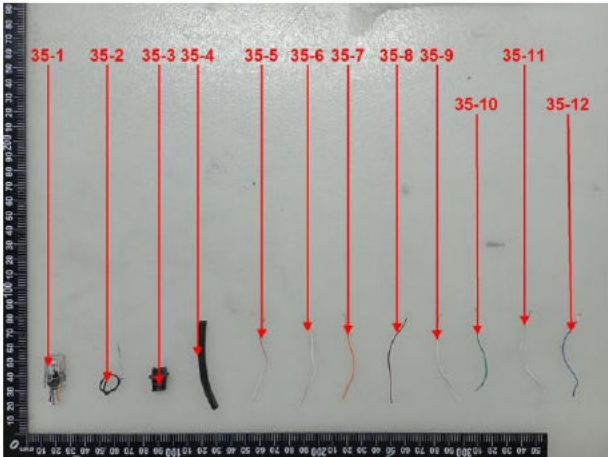
组件/部件/元器件照片



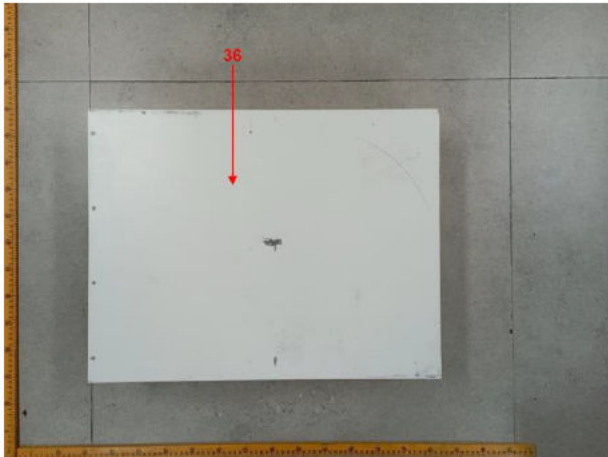
33-1~33-6



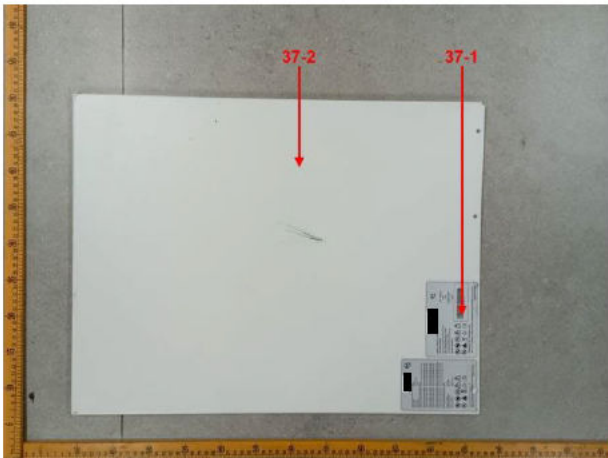
34-1~34-11



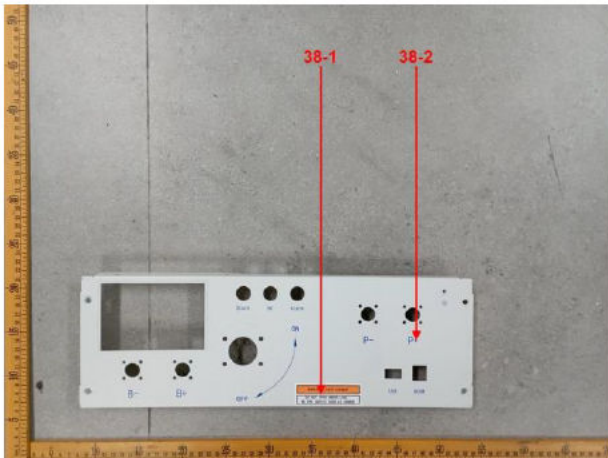
35-1~35-12



36

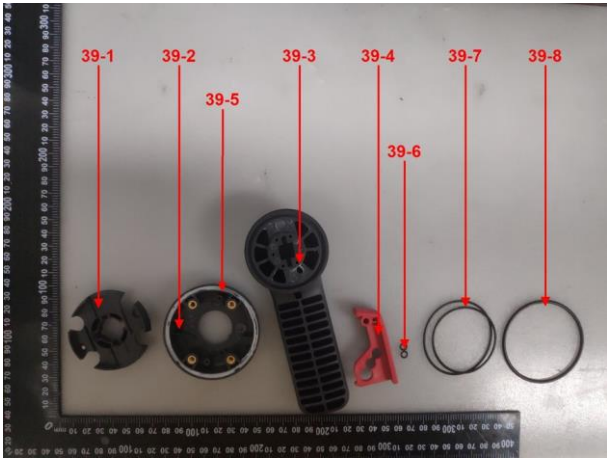


37-1~37-2

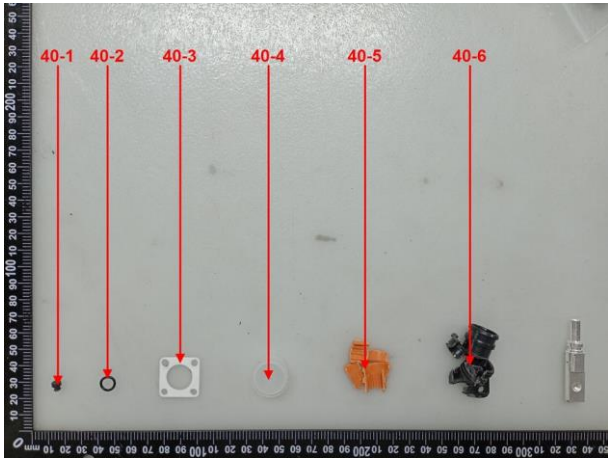


38-1~38-2

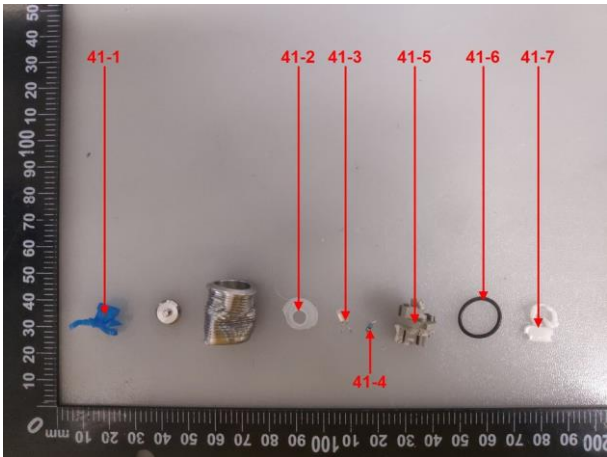
组件/部件/元器件照片



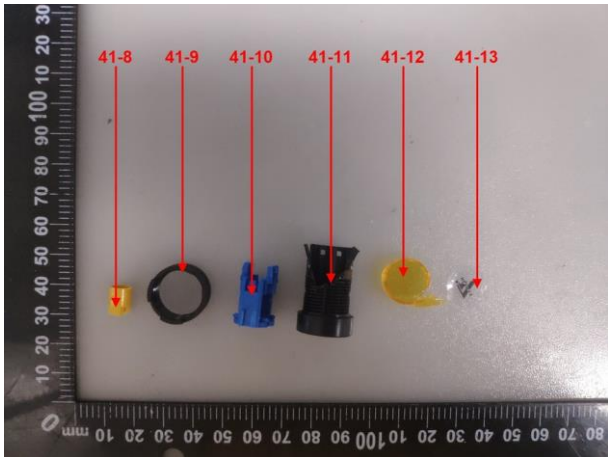
39-1~39-8



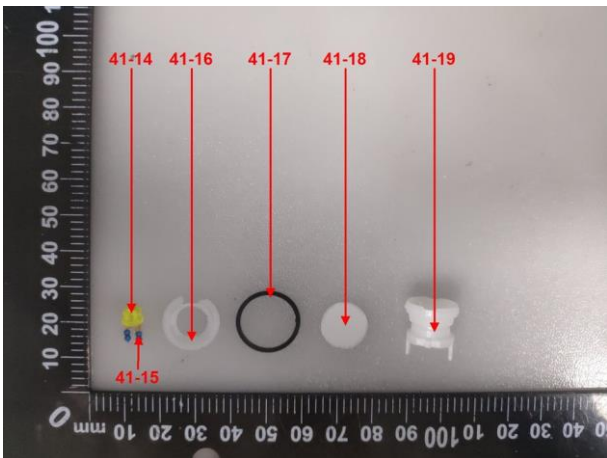
40-1~40-6



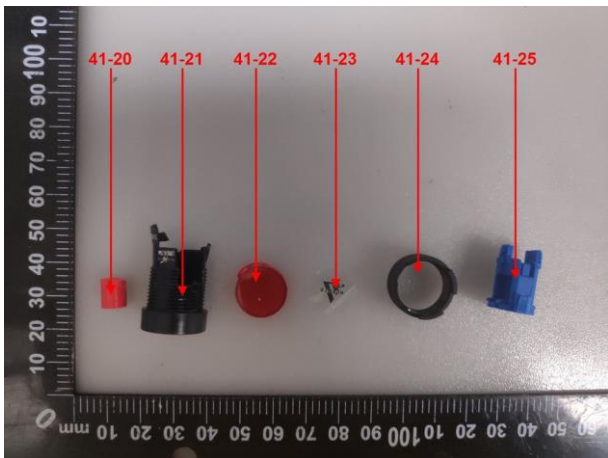
41-1~41-7



41-8~41-13

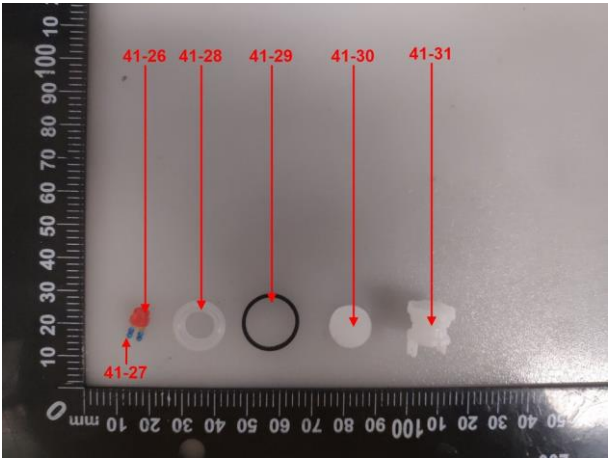


41-14~41-19

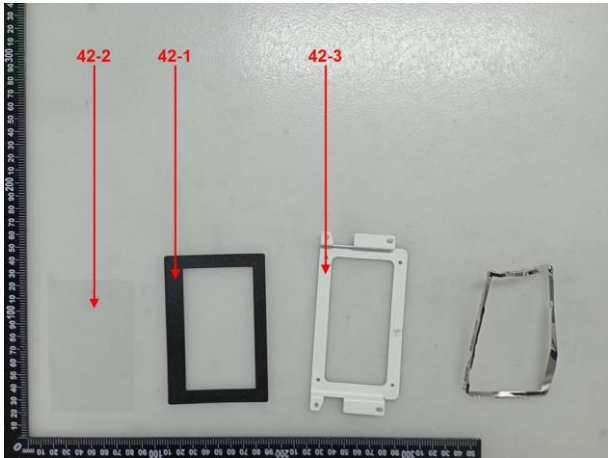


41-20~41-25

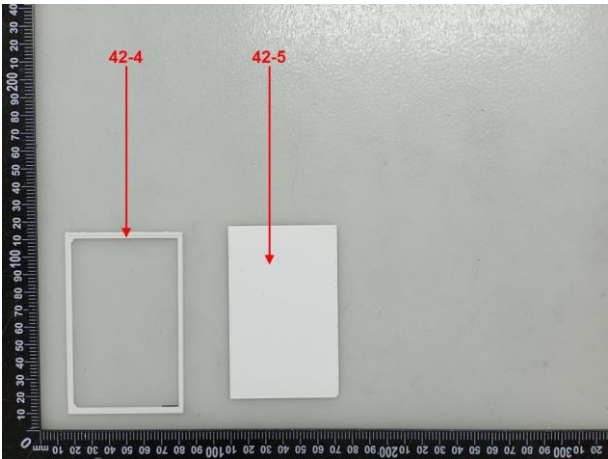
组件/部件/元器件照片



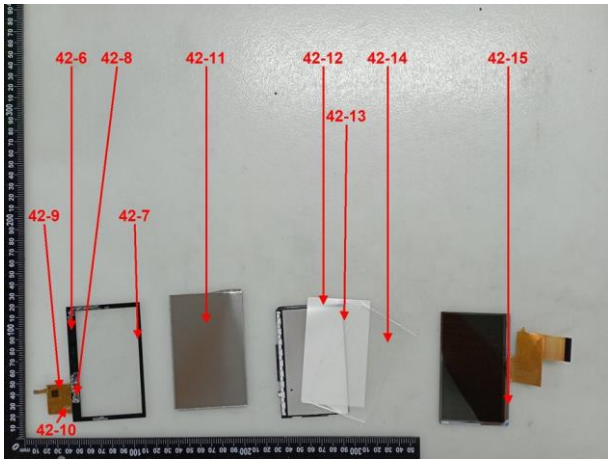
41-26~41-31



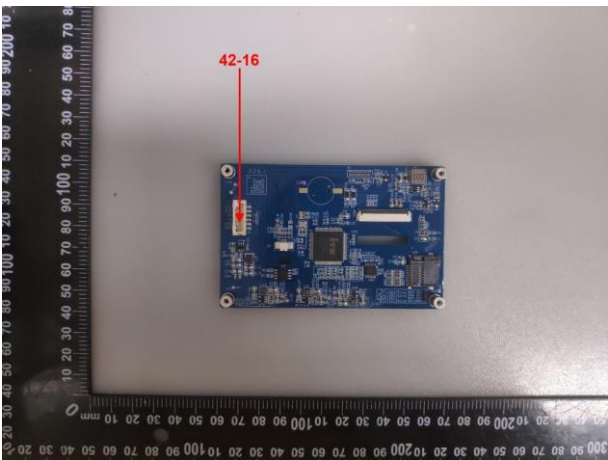
42-1~42-3



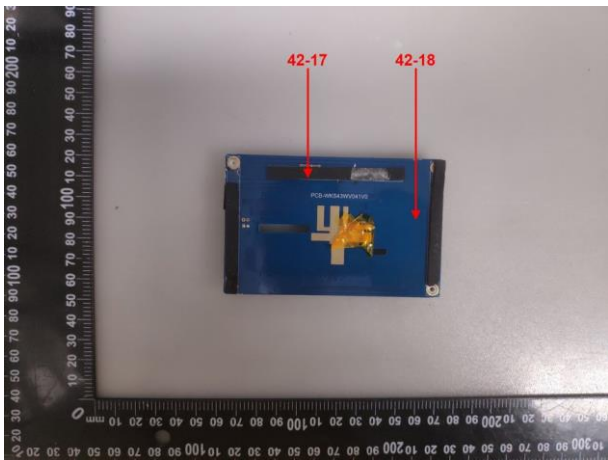
42-4~42-5



42-6~42-15

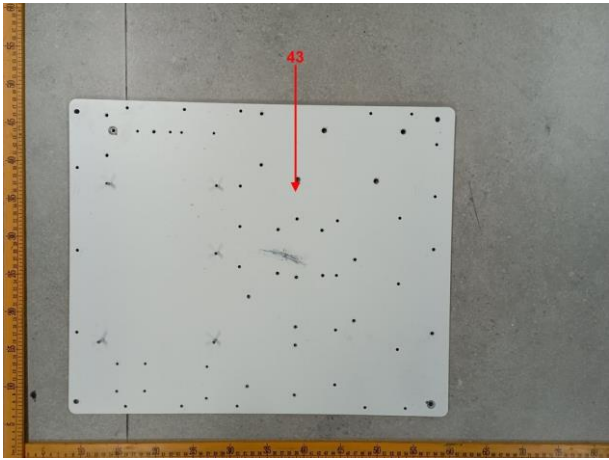


42-16

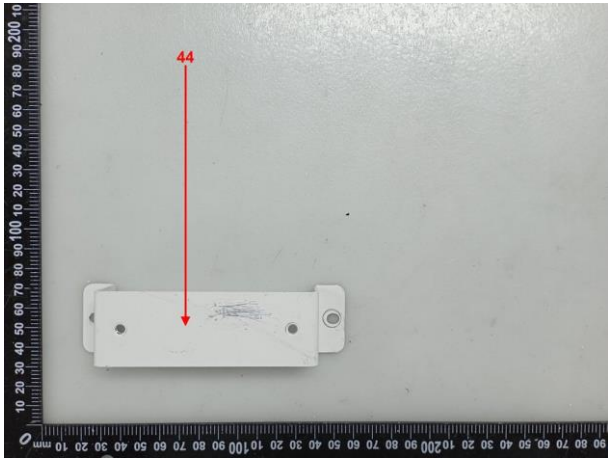


42-17~42-18

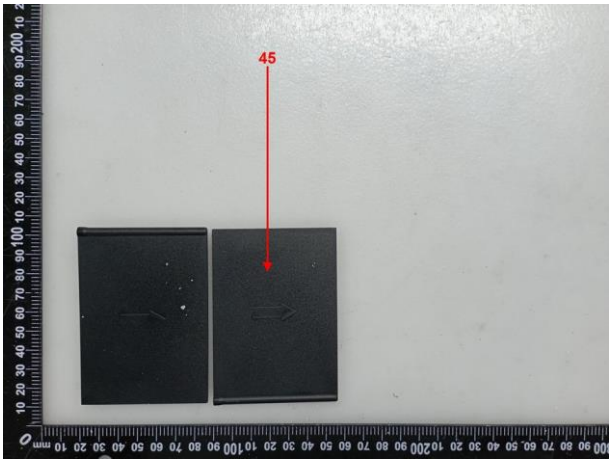
组件/部件/元器件照片



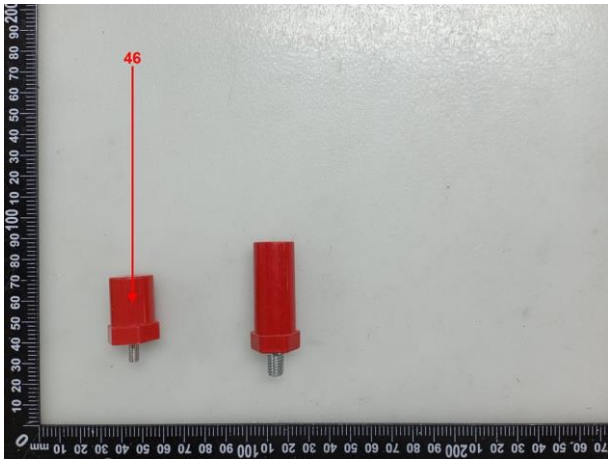
43



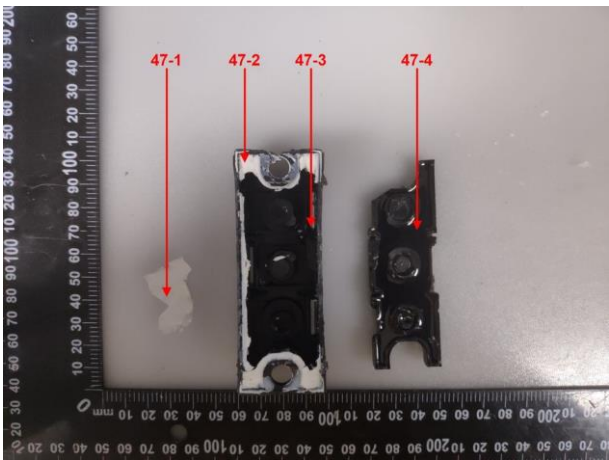
44



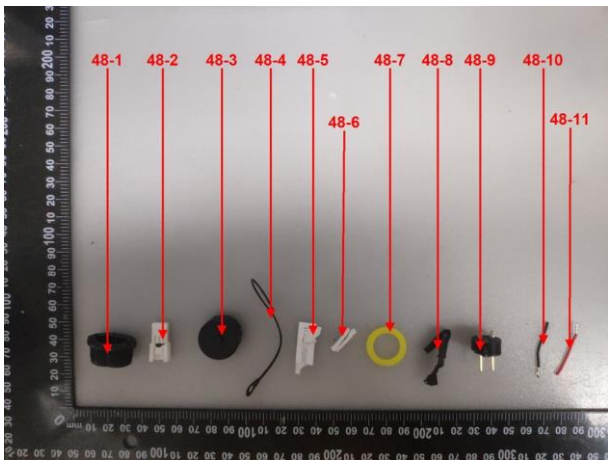
45



46

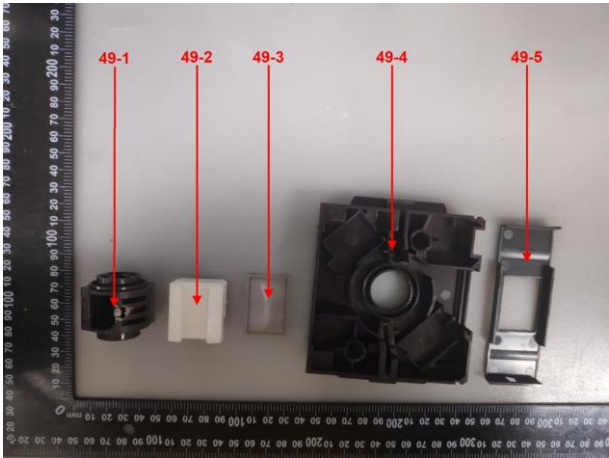


47-1~47-4

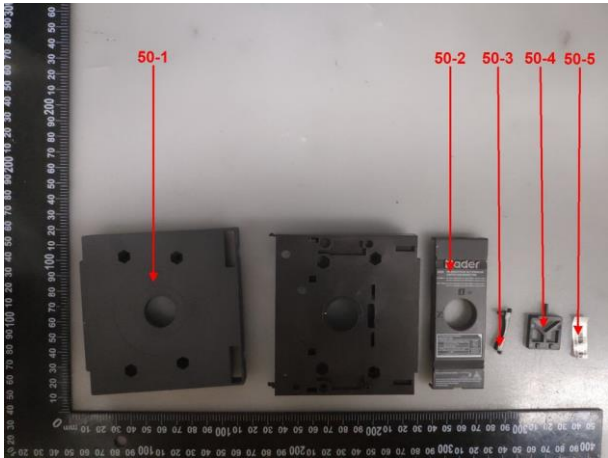


48-1~48-11

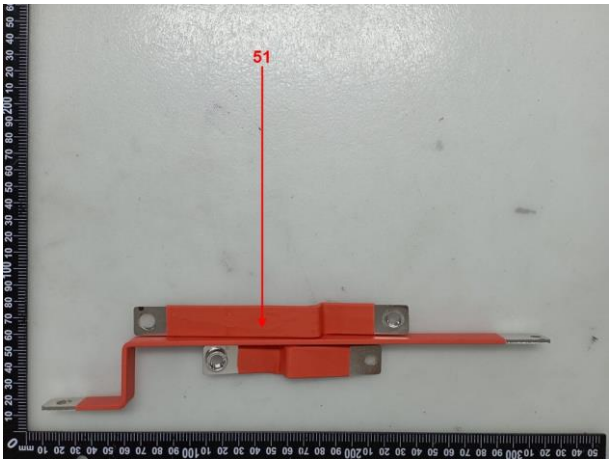
组件/部件/元器件照片



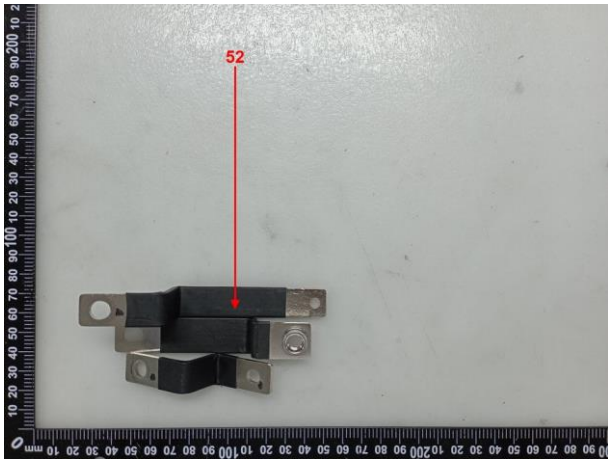
49-1~49-5



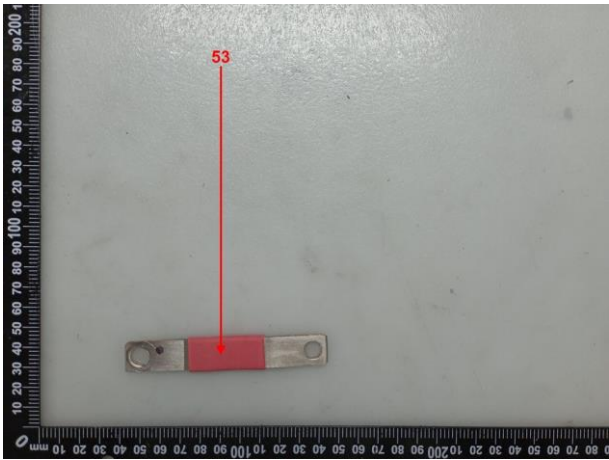
50-1~50-5



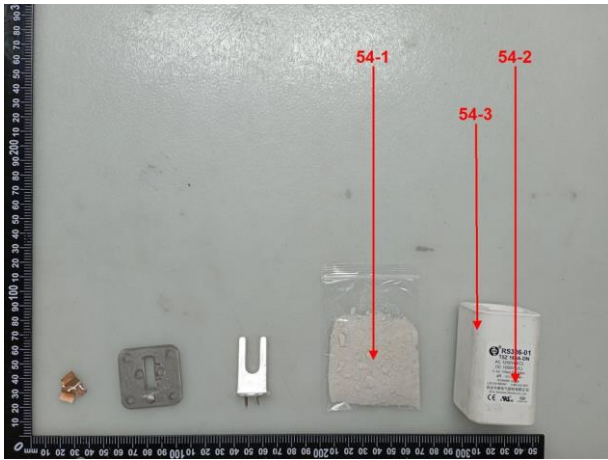
51



52

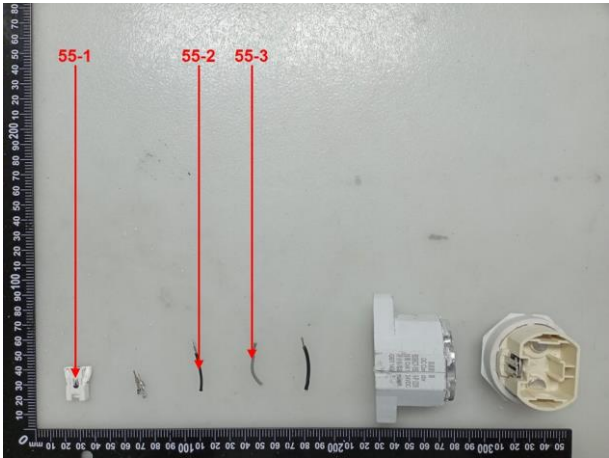


53

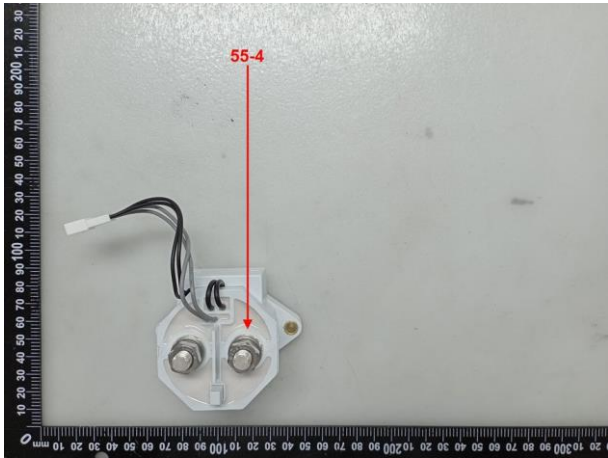


54-1~54-3

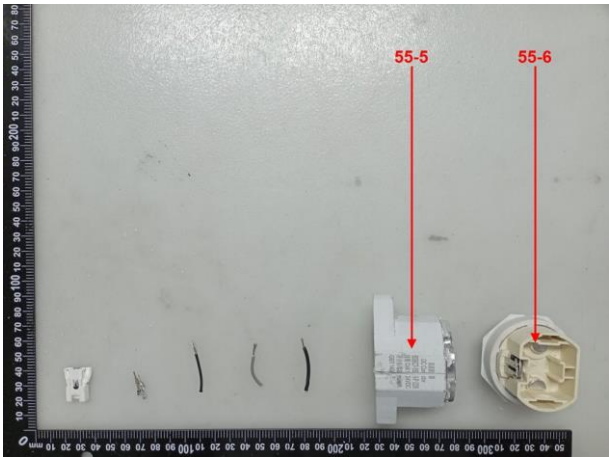
组件/部件/元器件照片



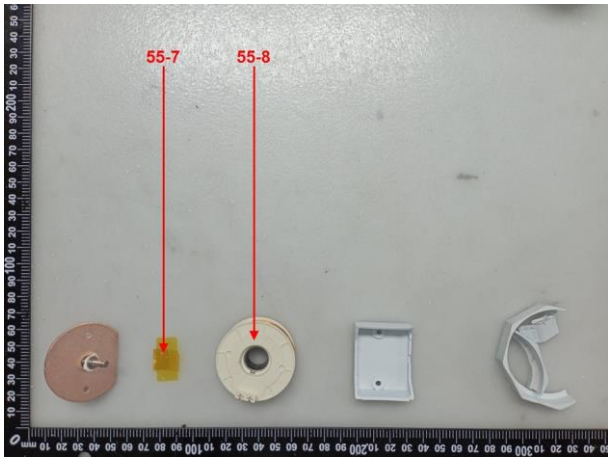
55-1~55-3



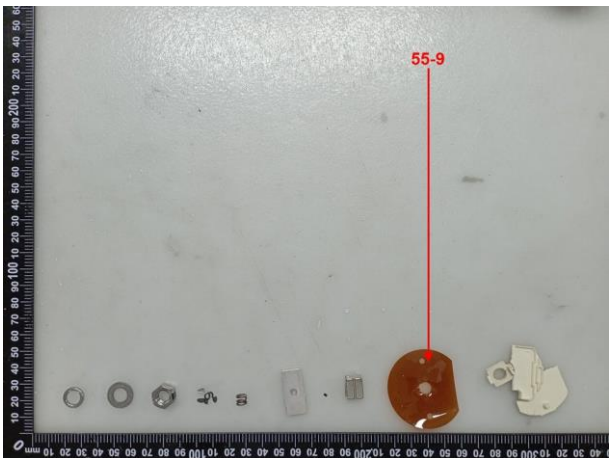
55-4



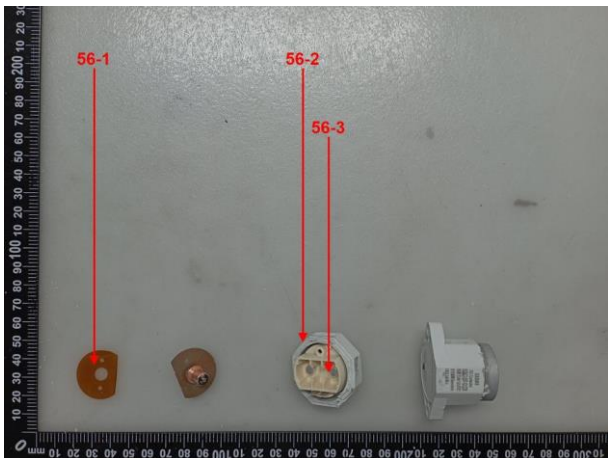
55-5~55-6



55-7~55-8

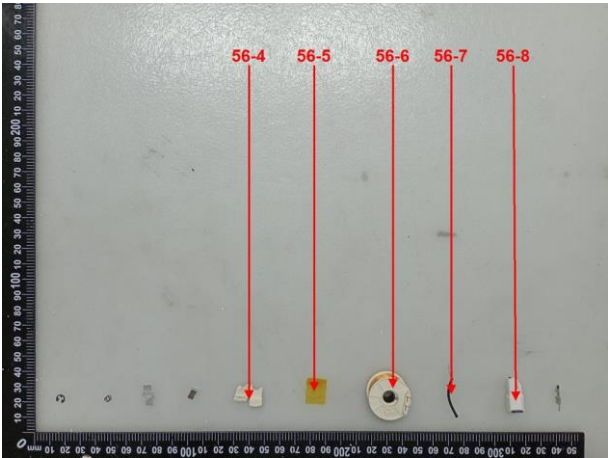


55-9

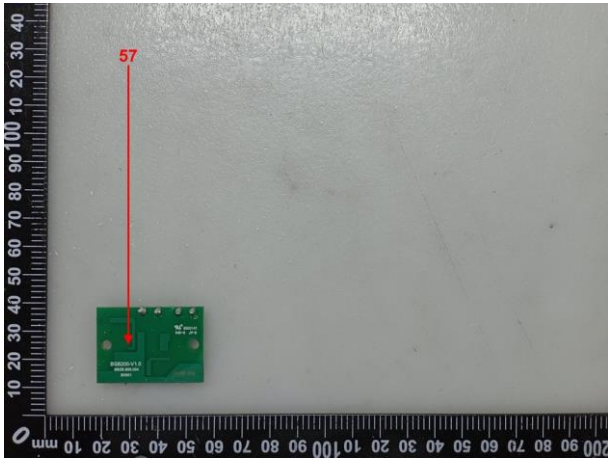


56-1~56-3

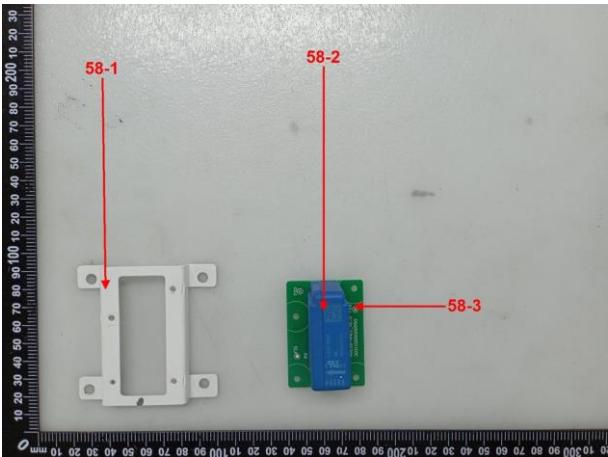
组件/部件/元器件照片



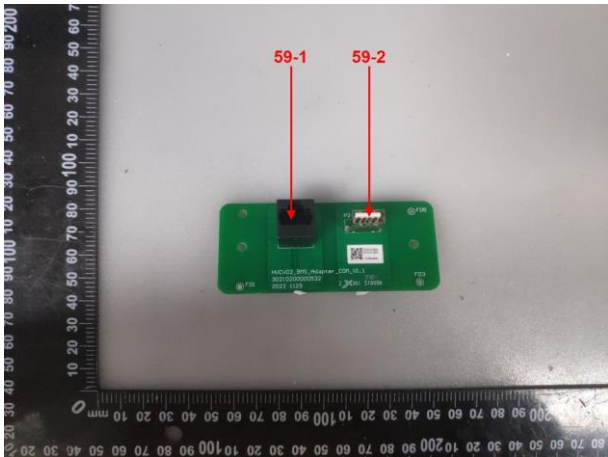
56-4~56-8



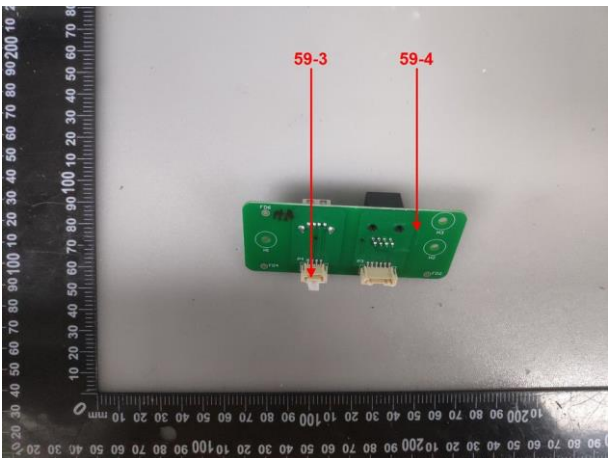
57



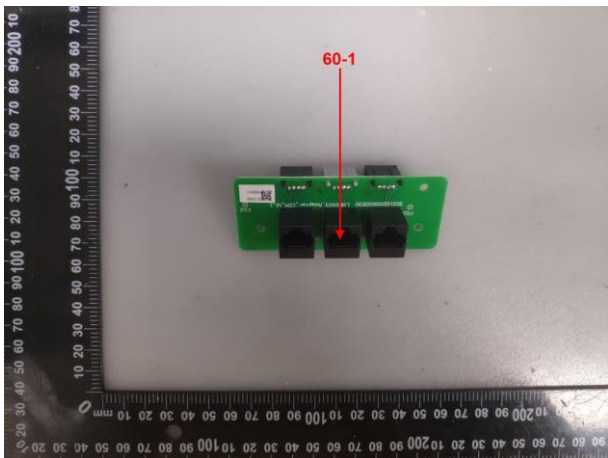
58-1~58-3



59-1~59-2

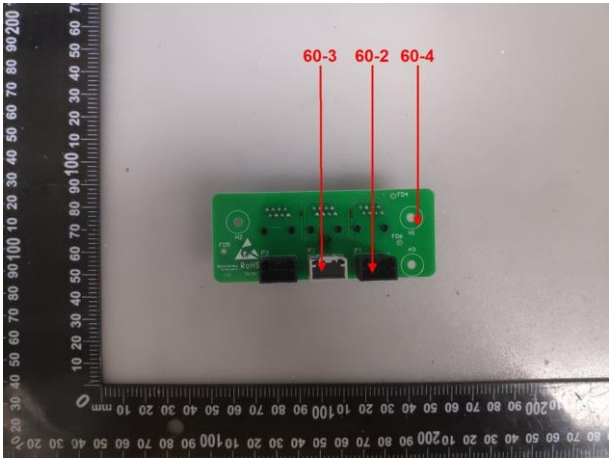


59-3~59-4

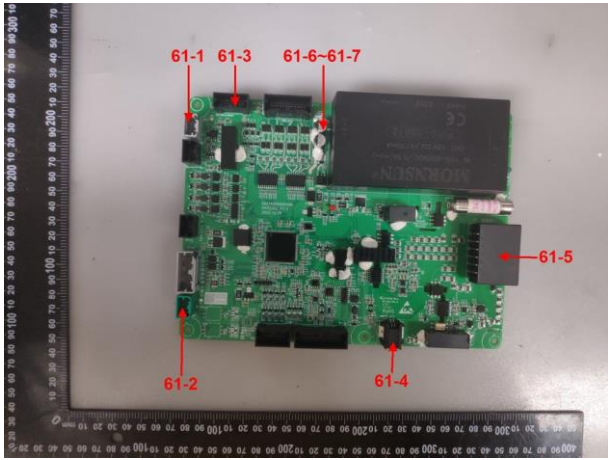


60-1

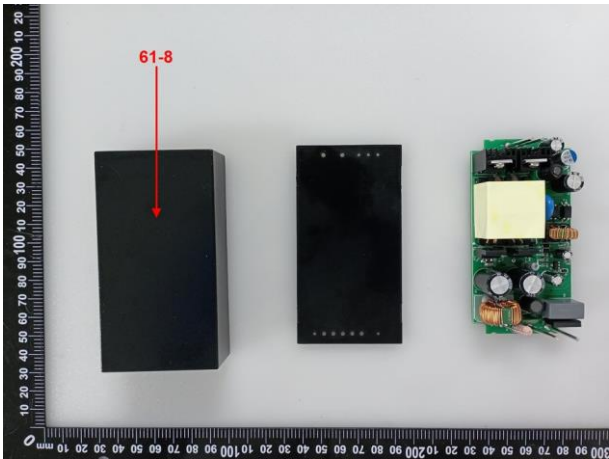
组件/部件/元器件照片



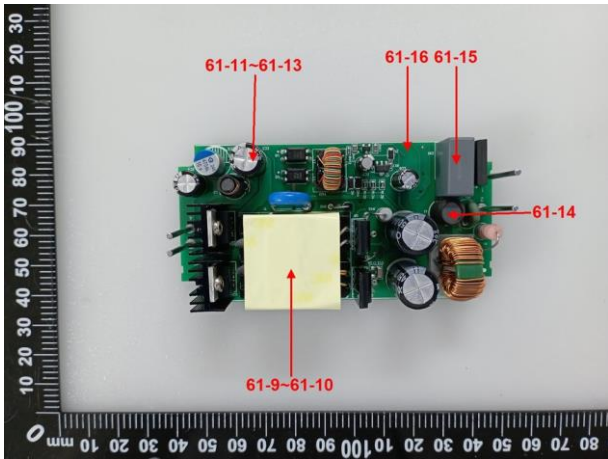
60-2~60-4



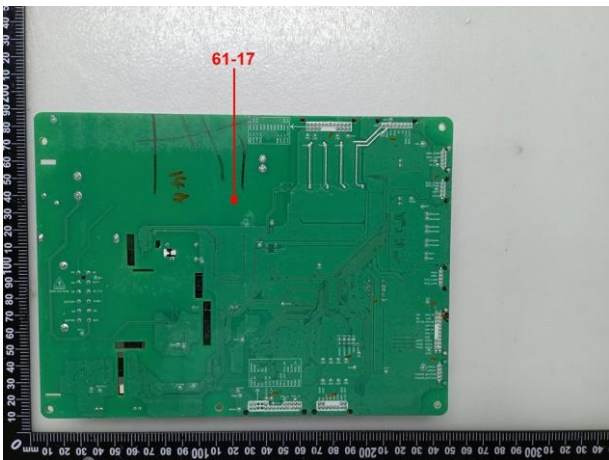
61-1~61-7



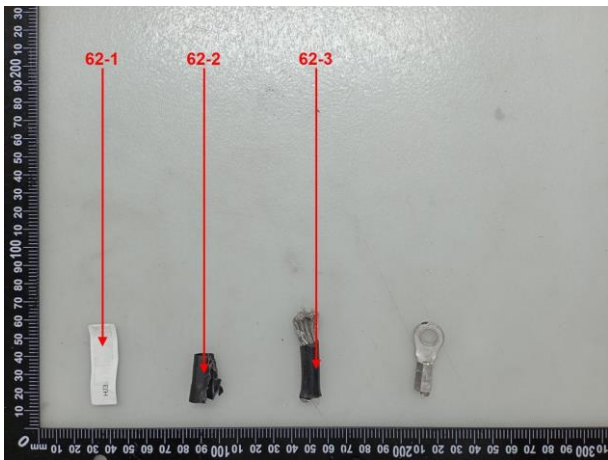
61-8



61-9~61-16

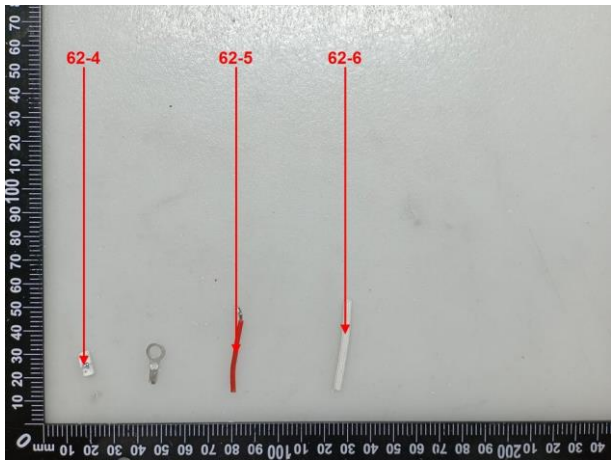


61-17

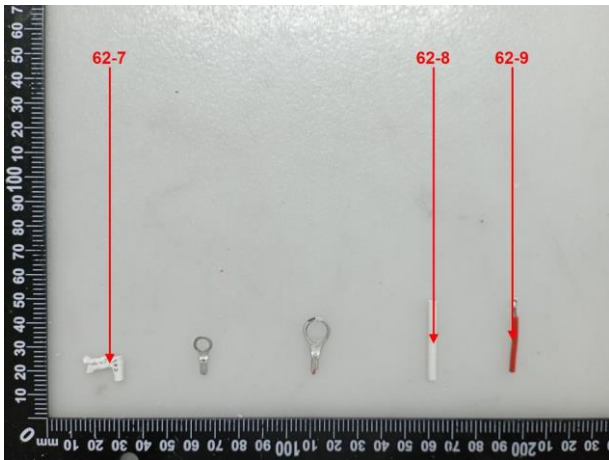


62-1~62-3

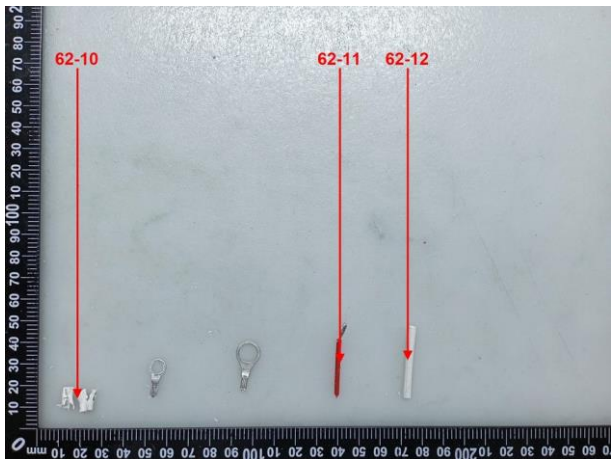
组件/部件/元器件照片



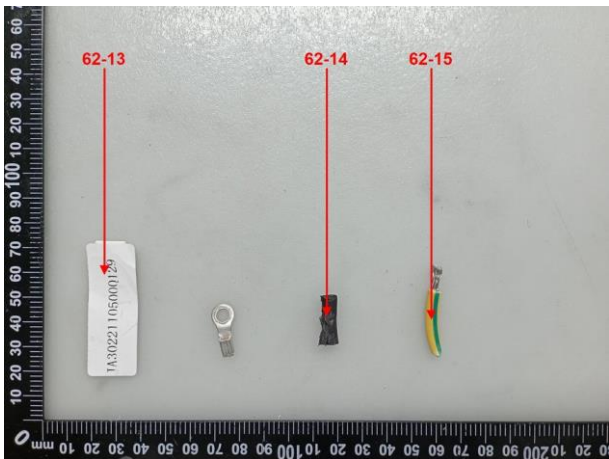
62-4~62-6



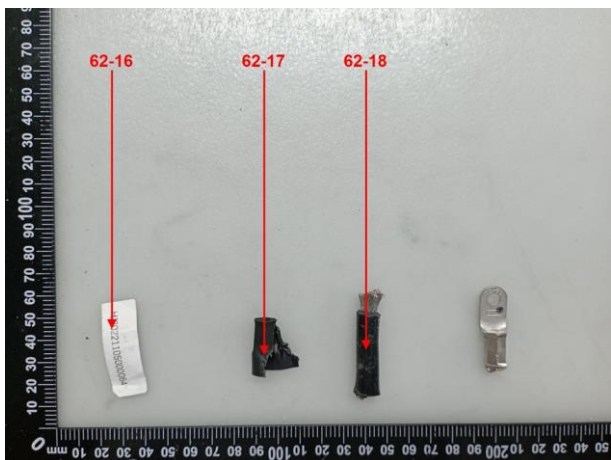
62-7~62-9



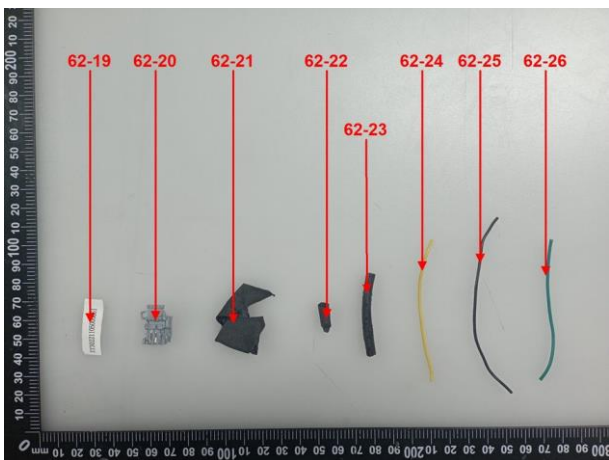
62-10~62-12



62-13~62-15

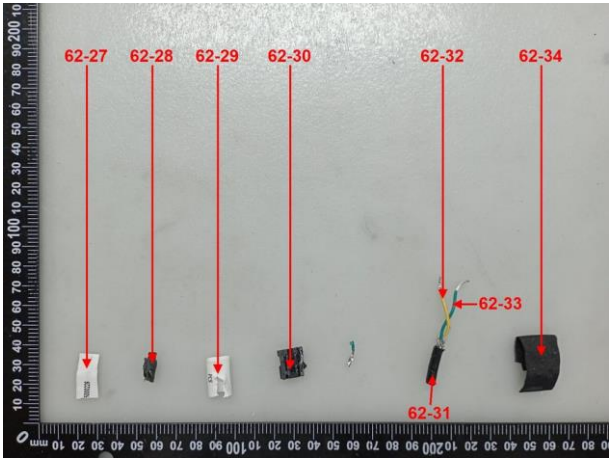


62-16~62-18

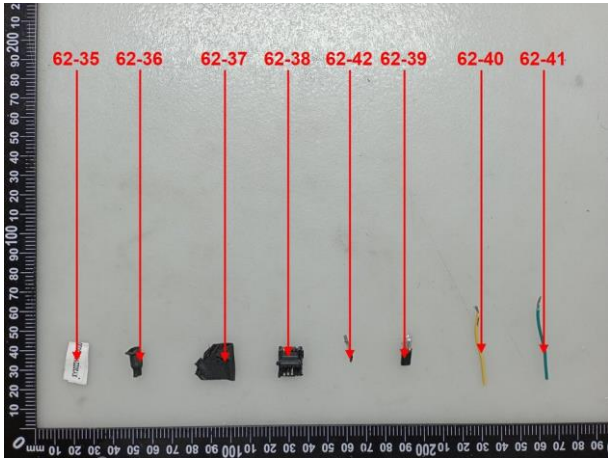


62-19~62-26

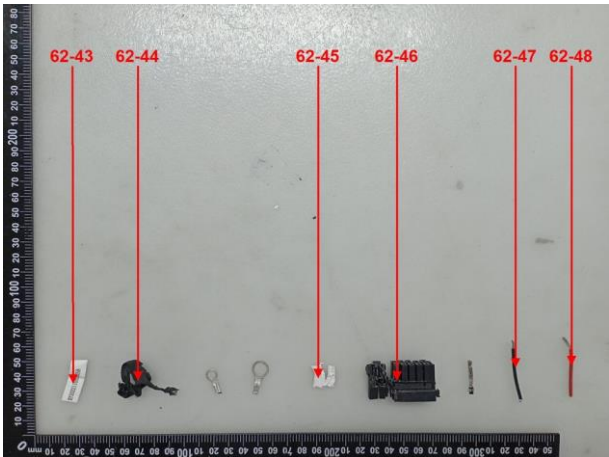
组件/部件/元器件照片



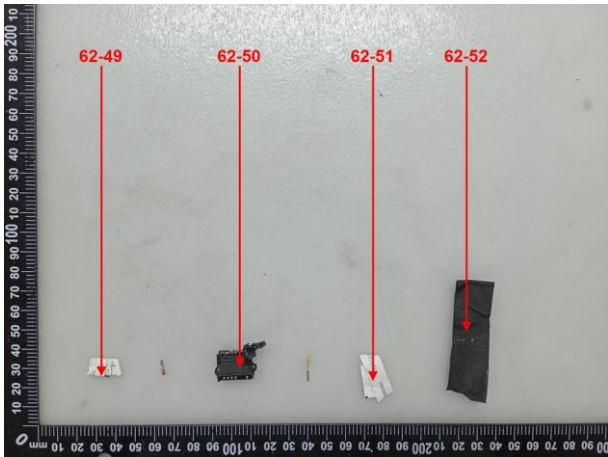
62-27~62-34



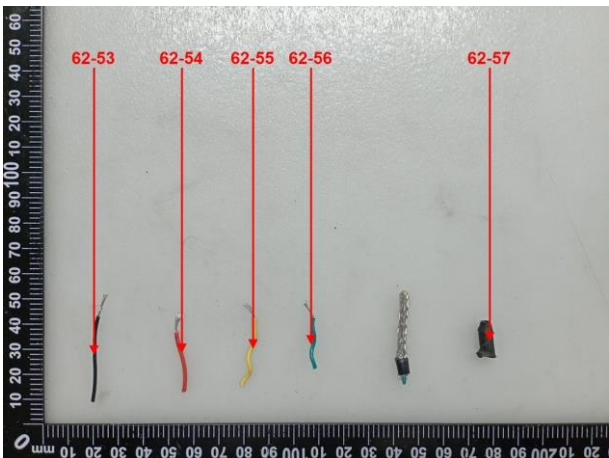
62-35~62-42



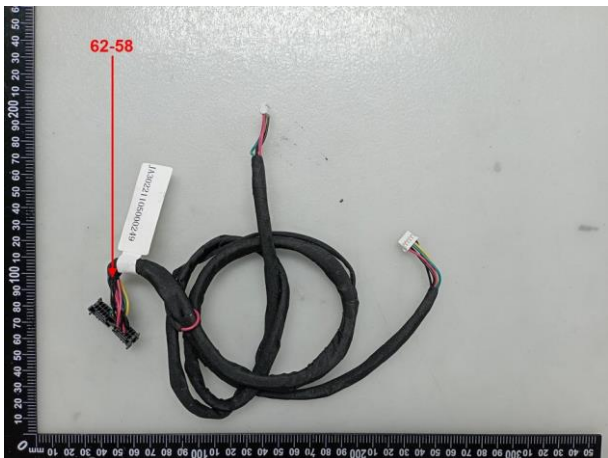
62-43~62-48



62-49~62-52

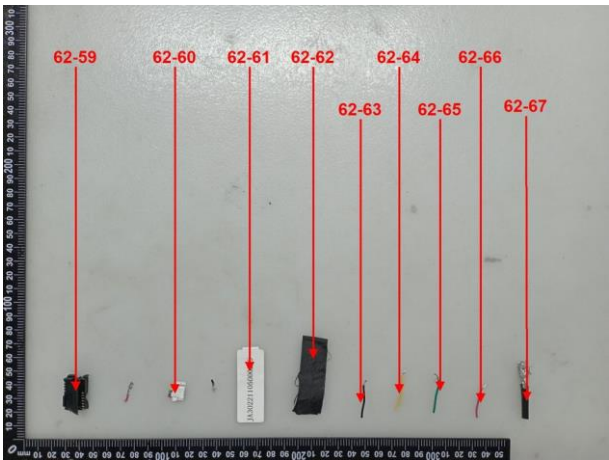


62-53~62-57

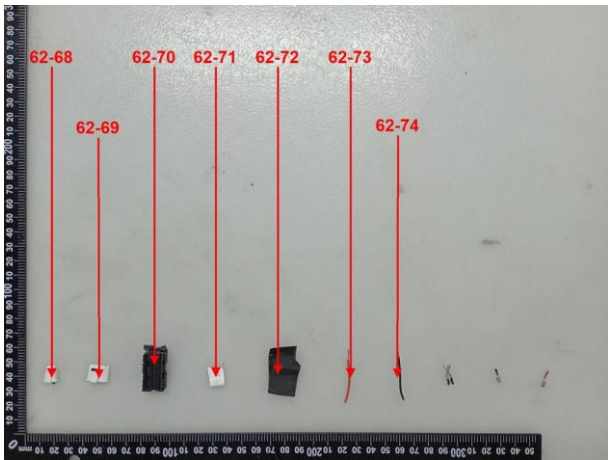


62-58

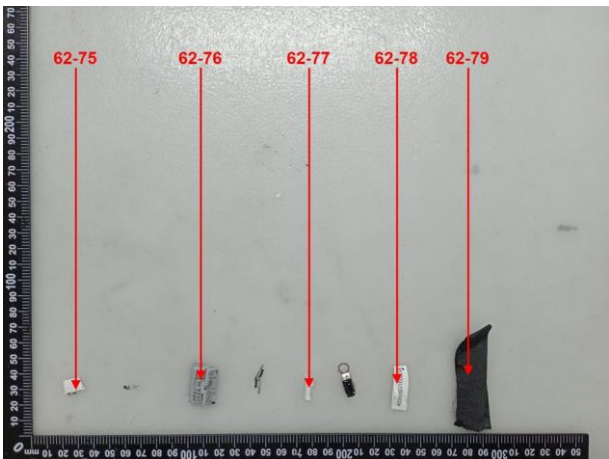
组件/部件/元器件照片



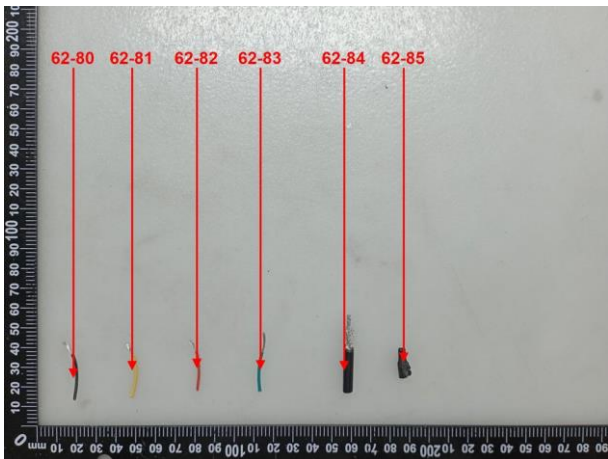
62-59~62-67



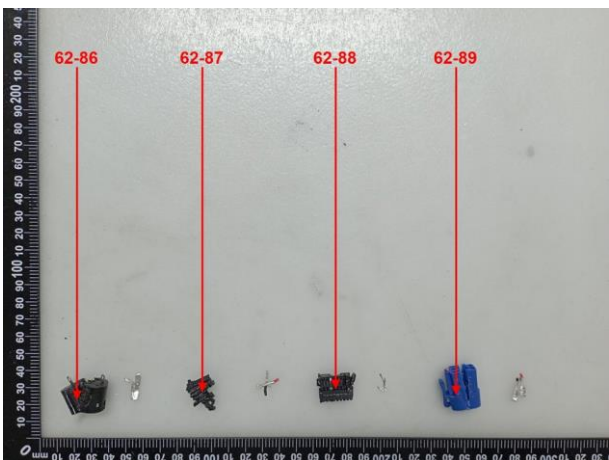
62-68~66-74



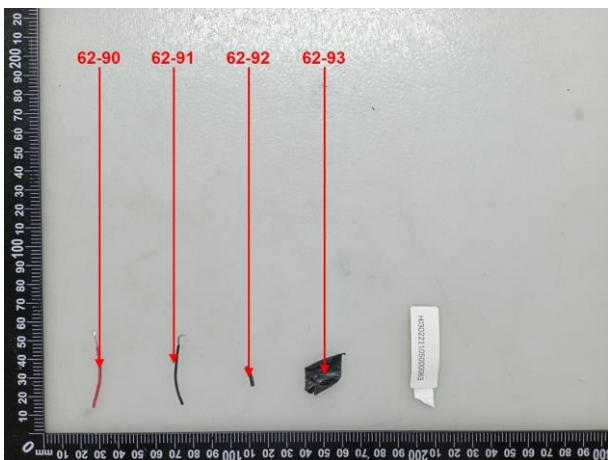
62-75~62-79



62-80~62-85

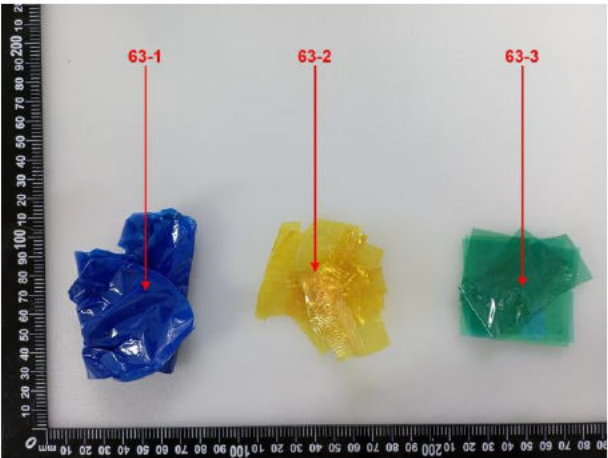


62-86~82-89

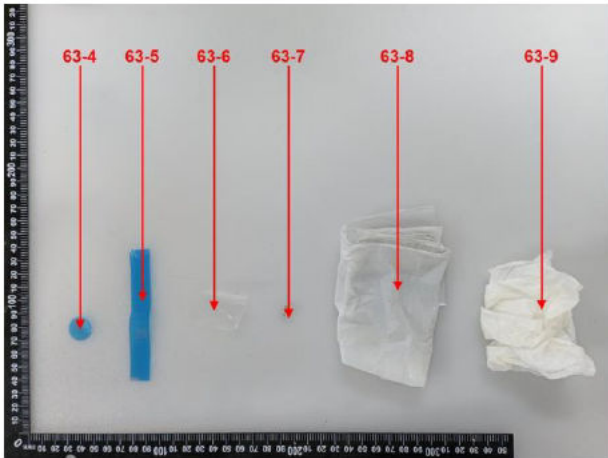


62-90~62-93

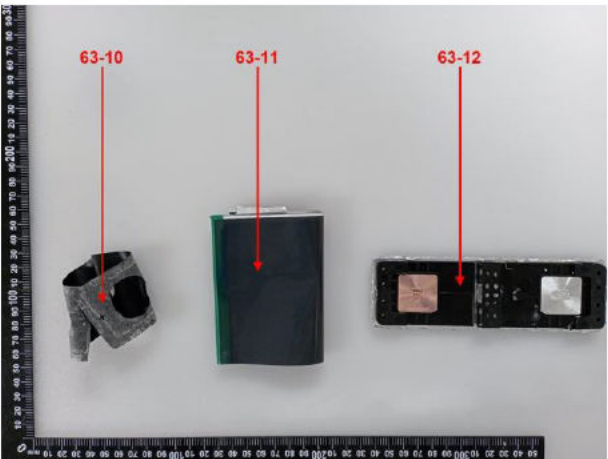
组件/部件/元器件照片



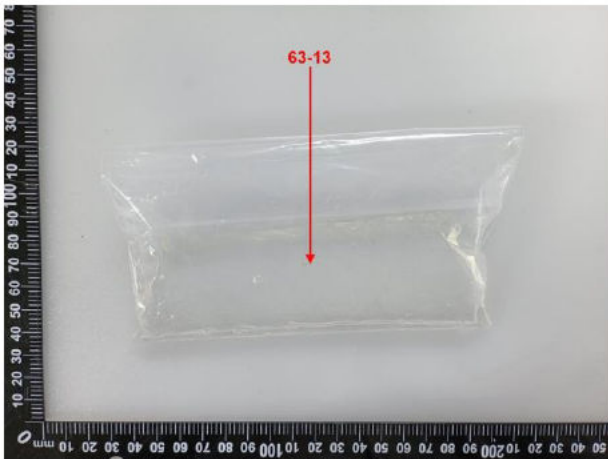
63-1~63-3



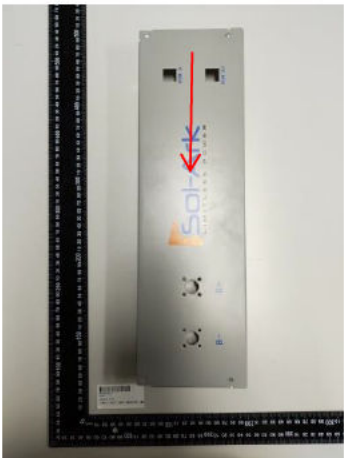
63-4~63-9



63-10~63-12



63-13



64

注 意 事 项 Important

1. 报告无检测单位印章无效;

The test report is invalid without the official stamp of CVC;

2. 未经本试验室书面同意, 不得部分地复制本报告;

Any part photocopies of the test report are forbidden without the written permission from CVC;

3. 报告无主检、审核、批准人签名无效;

The test report is invalid without the signatures of Author and Reviewer;

4. 报告涂改无效;

The test report is invalid if altered;

5. 对检测报告若有异议, 请于收到报告之日起十五天内向检测单位提出;

Objections to the test report must be submitted to CVC within 15 days;

6. 一般情况, 委托检测结果仅对所检测样品有效;

Generally, commission test is responsible for the tested samples only;

7. 检测结果中“—”或“N”表示“不适用”, “/”表示“未检测”, “P”表示“通过”或“合格”, “F”表示“不通过”或“不合格”。

As for the test result, “—” or “N” means “not applicable”, “/” means “not testing”, “P” means “pass” and “F” means “fail”.

****报告中未加 CMA 标志时, 检测数据和结果仅供科研、教学或内部质量控制之用。 ****

****The test data and test results given in this test report should only be used for purposes of scientific research, teaching and internal quality control when the CMA symbol is not presented. ****

地址: 广东省广州市科学城开泰大道天泰一路 3 号

Lab address: No.3, Tiantaiyi Road, Kaitai Avenue, Science City, Guangzhou, Guangdong, P.R. China

邮政编码(Post Code): 510663 电话(Tel): 020 32293888

传真(Fax): 020 32293889 E-mail: office@cvc.org.cn

<http://www.cvc.org.cn>